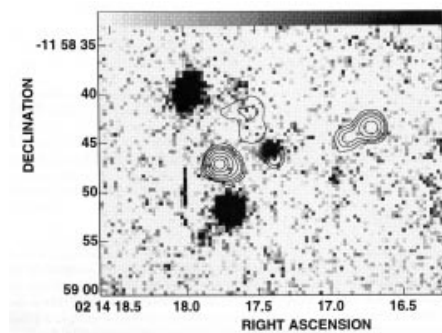
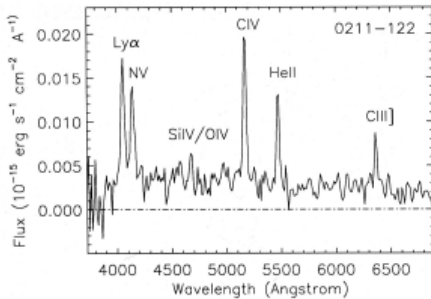


Object: TXS 0211-122
equinox: 1950
RA: 02 11 51.59
Dec: -12 12 44.0
z: 2.338
Mag: R=22.7

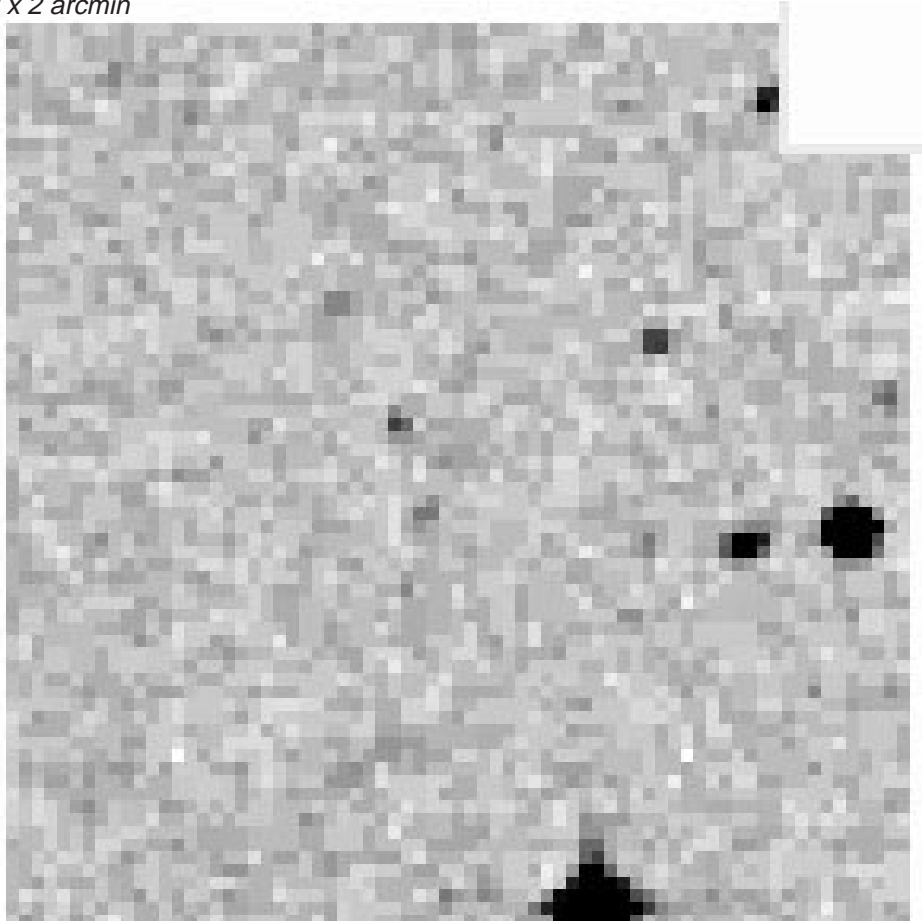
Comments:
dusty radio galaxy

References:

1997ApJS..109....1C
CARILLI,C.L.,...
RADIO CONTINUUM IMAGING OF HIGH-
REDSHIFT...
1997A&A...323...21V
VILLAR-MARTIN,...
THE IONIZATION MECHANISM OF THE
EXTENDED...
1997A&A...321..389v
VAN OJIK R.,RO...
A SEARCH FOR MOLECULAR GAS IN
HIGH REDSH...
1997A&A...317..358v
VAN OJIK R.,RO...
THE GASEOUS ENVIRONMENTS OF
RADIO GALAXI...
1996ApJ...467..191G
GOPAL-KRISHNA,...
ON THE ORIGIN OF CORRELATED
RADIO-OPTICA...
1996AJ....111.1945D
DOUGLAS,J.N.,...
THE TEXAS SURVEY OF RADIO
SOURCES COVERL...
1996A&A...312..751V
VILLAR-MARTIN M...
THE EFFECTS OF RESONANCE SCATTER-
ING AND...
1995A&AS..114...51R
ROTTGERING,H...
CCD IMAGING OF ULTRA-STEEP-
SPECTRUM RADI...
1994ApJS...90..179G
GRIFFITH,M.R....
THE PARKES-MIT-NRAO(PMN) SUR-
VEYS.III...
1994A&A...289...54v
VAN OJIK,R.,R...
TX0211-122:A STARBURST RADIO
GALAXY AT...
1994A&AS..108...79R
ROTTERGING,H...
SAMPLES OF ULTRA-STEEP SPECTRUM
RADIO SO...



2 x 2 arcmin



Object: MRC0406-244
equinox: 1950
RA: 04h06m44.3s
Dec: -24d26m06s
z: 2.44
Mag: 22.4

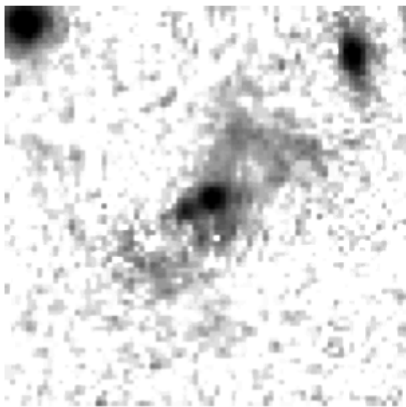
Comments:

References:

1997ApJS..109....1C
CARILLI, C. L.,...
RADIO CONTINUUM IMAGING OF HIGH-
REDSHIFT...
1996ApJS..106..281M
MCCARTHY, P. J....
EMISSION-LINE PROPERTIES OF 3CR
RADIO GA...
1996AJ....111.1945D
DOUGLAS, J. N.,...
THE TEXAS SURVEY OF RADIO
SOURCES COVERL...
1994ApJS...90..179G
GRIFFITH, M. R....
THE PARKES-MIT-NRAO (PMN) SUR-
VEYS. III. ...
1993PASP..105.1051M
MCCARTHY, P. J....
DISTANT RADIO GALAXIES IN THE
NEAR-IR ...
1993MNRAS.263..139S
SINGAL, A. K. ...
COSMIC EVOLUTION AND LUMINOSITY
DEPENDEN...
1993ApJ...411...67E
EALES, S. A., A...
INFRARED SPECTROSCOPY OF 11 RADIO
GALAXI...
1992ApJ...387L..29M
MCCARTHY, P. J....
THE LY{ALPHA}/H{ALPHA} RATIO IN
HIGH-RED...
1992ApJ...386...52M
MCCARTHY, P. J....
INFRARED IMAGING OF Z > 2 RADIO
GALAXIES...
1991AJ....102..522M
MCCARTHY, P. J....
HIGH REDSHIFT RADIO GALAXIES
FROM THE MO...

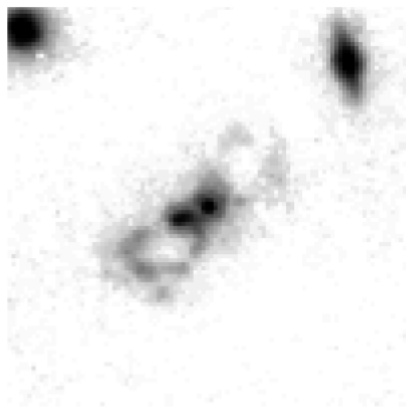
MRC 0406-244
z = 2.43

WFPC2



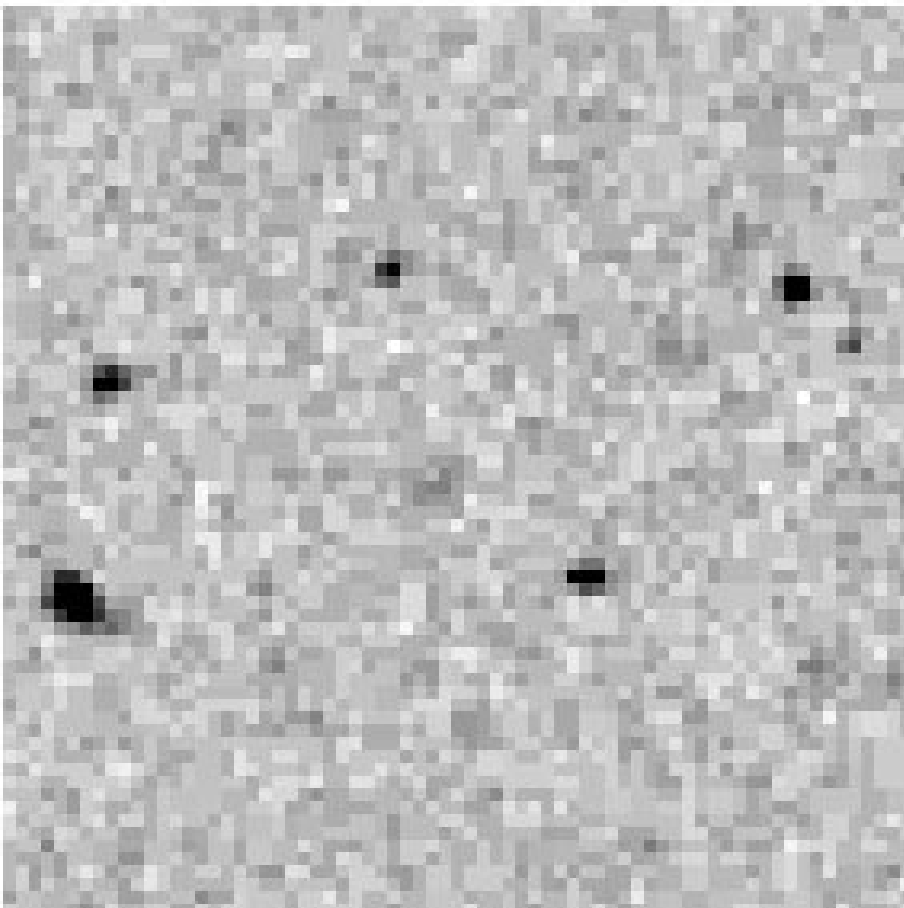
F675W+F555W

NICMOS



F160W

2 x 2 arcmin

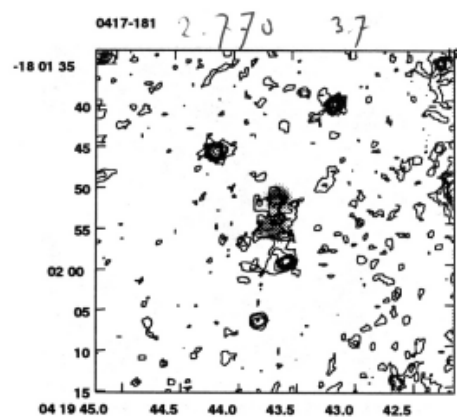
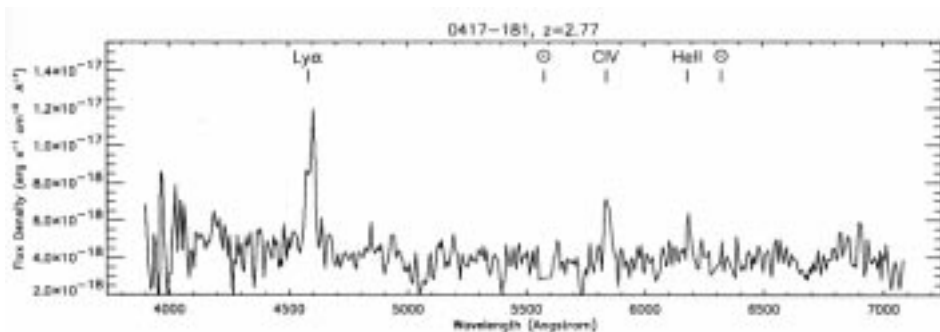


Object: PMN J0419-181
equinox: 1950
RA: 04 17 29.6
Dec: -18 09 00
z: 2.73
Mag: R = 21.7

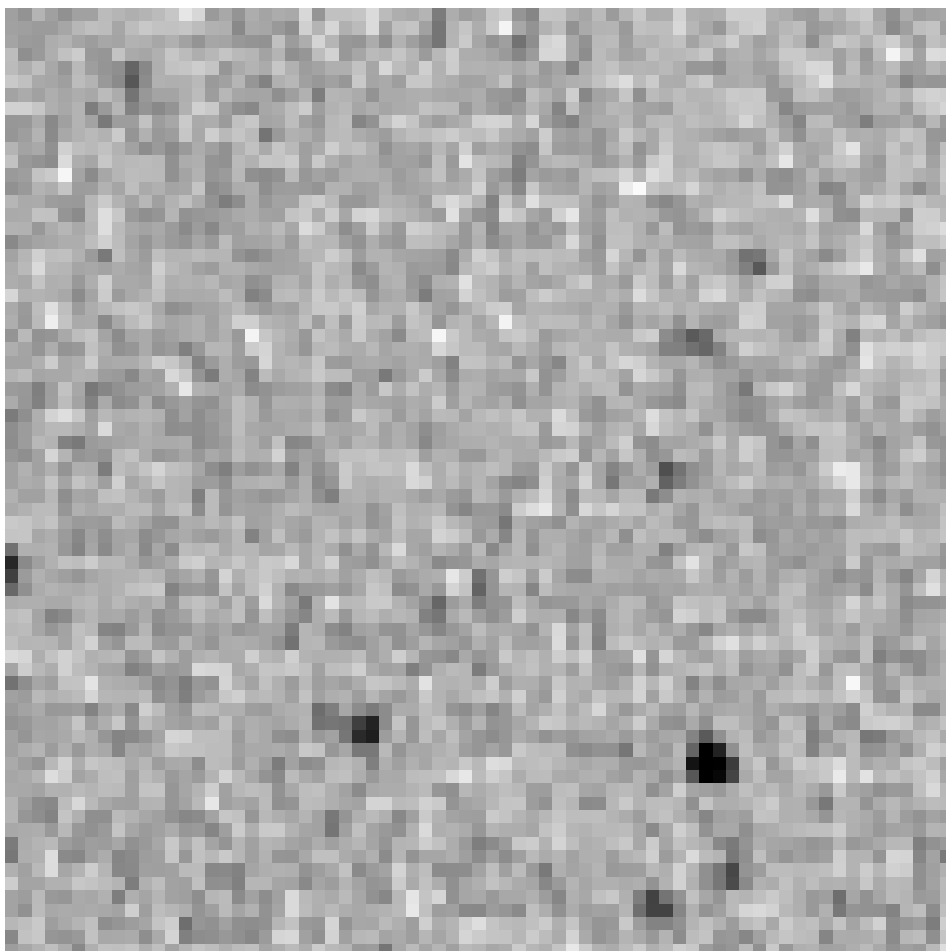
Comments:
= MRC 0417-181

References:

1997ApJS..109....1C
CARILLI, C. L.,...
RADIO CONTINUUM IMAGING OF HIGH-REDSHIFT...
1997A&A...317..358v
VAN OJK R., RO...
THE GASEOUS ENVIRONMENTS OF RADIO GALAXI...
1996AJ....111.1945D
DOUGLAS, J. N.,...
THE TEXAS SURVEY OF RADIO SOURCES COVERL...
1996A&A...312..751V
VILLAR-MARTIN M...
THE EFFECTS OF RESONANCE SCATTERING AND ...
1995A&AS..114...51R
ROTTGERING, H. ...
CCD IMAGING OF ULTRA-STEEP-SPECTRUM RADI...
1994ApJS...90..179G
GRIFFITH, M. R....
THE PARKES-MIT-NRAO (PMN) SURVEYS. III. ...



2 x 2 arcmin



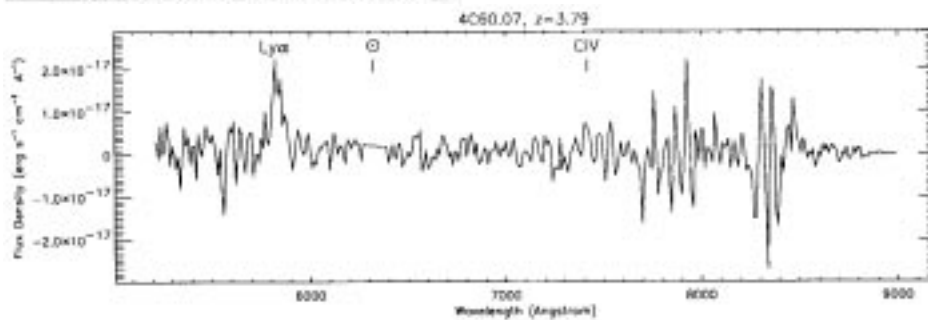
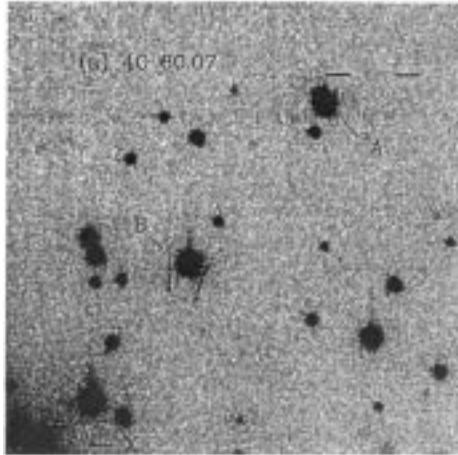
Object: 4C 60.07
equinox: 1950
RA: 05 08 25.78
Dec: 60 27 17.4
z: 3.79
Mag: R=23.2, I=21.3

Comments:
J2000 posn.
05h12m54.8s
+60d30m52s
High Galactic extinction

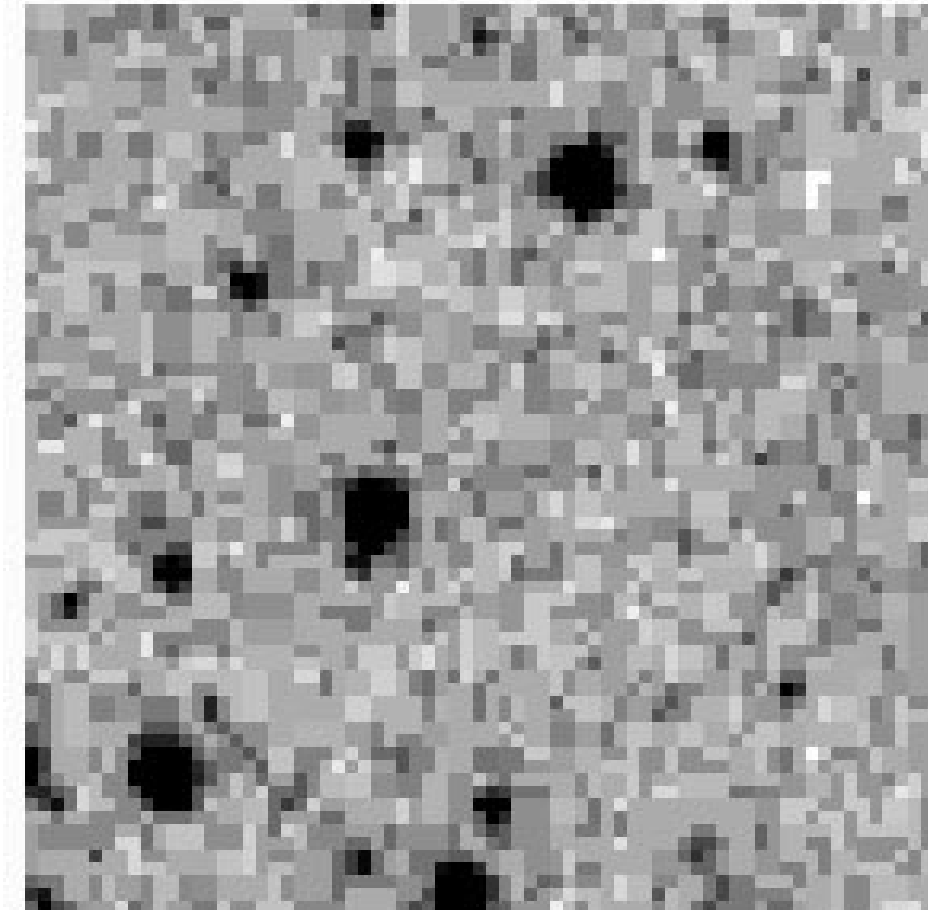
References:

1997ApJS..109....1C
CARILLI, C. L.,...
RADIO CONTINUUM IMAGING OF HIGH-
REDSHIFT...
1996ApJS..106..247C
CHAMBERS, K. C....
ULTRA-STEEP-SPECTRUM RADIO
SOURCES. II. ...
1996ApJS..106..215C
CHAMBERS, K. C....
UTLRA-STEEP-SPECTRUM RADIO
SOURCES. I. 4...
1996AJ....111.1945D
DOUGLAS, J. N.,...
THE TEXAS SURVEY OF RADIO
SOURCES COVERL...
1996A&A...312..751V
VILLAR-MARTIN M...
THE EFFECTS OF RESONANCE SCAT-
TERING AND ...
1995MNRAS.274..447H
HALES, S. E. G....
A REVISED MACHINE-READABLE
SOURCE LIST F...
1967MmRAS..71...49G
GOWER, J. F. R....
A SURVEY OF RADIO SOURCES IN THE
DECLINA...

97 x 97 arcsec

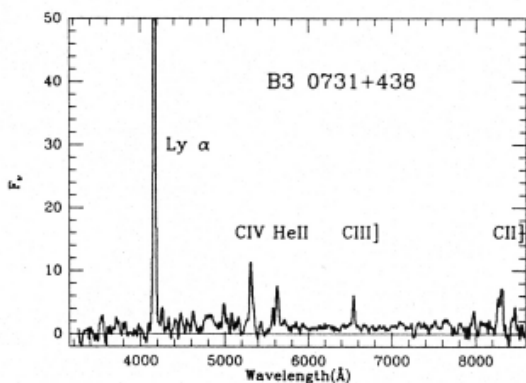


2 x 2 arcmin

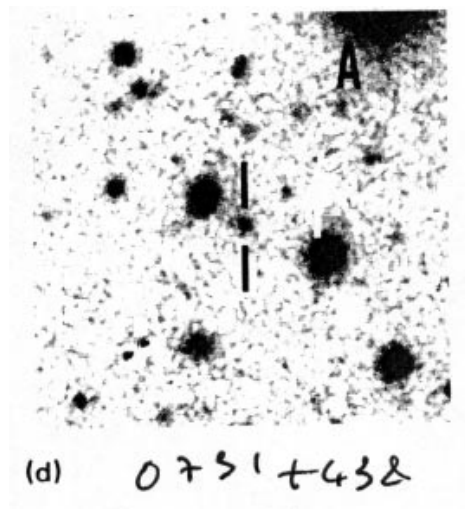


Object: B30731+438
equinox: 1950
RA: 07 31 49.37
Dec: 43 50 59.0
z: 2.429
Mag:

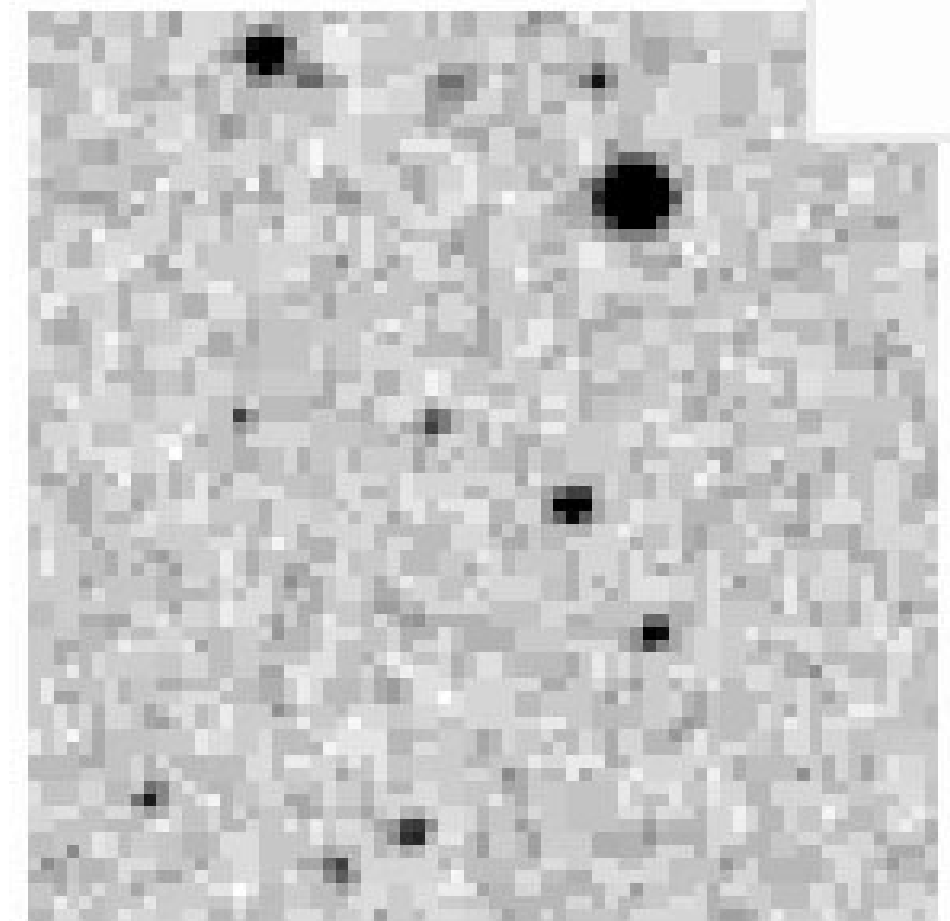
Comments:



65 x 65 arcsec



2 x 2 arcmin



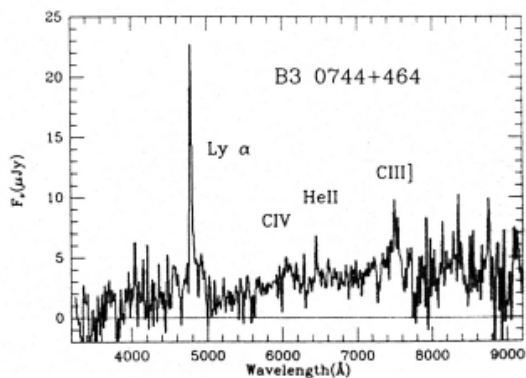
References:

McCarthy 1991 AJ,102,518

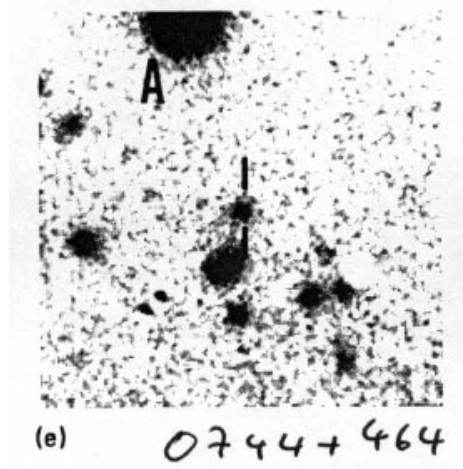
 1997ApJS..109....1C
 CARILLI, C. L.,...
 RADIO CONTINUUM IMAGING OF HIGH-REDSHIFT...
 1996AJ....111.1945D
 DOUGLAS, J. N.,...
 THE TEXAS SURVEY OF RADIO SOURCES COVERI...
 1993MNRAS.263..139S
 SINGAL, A. K. ...
 COSMIC EVOLUTION AND LUMINOSITY DEPENDEN...
 1993ApJ...411...67E
 EALES, S. A., A...
 INFRARED SPECTROSCOPY OF 11 RADIO GALAXI...
 1992ApJS...79..331W
 WHITE, R. L., A...
 A NEW CATALOG OF 30,239 1.4 GHZ SOURCES ...
 1992ApJ...387L..29M
 MCCARTHY, P. J....
 THE LY{ALPHA}/H{ALPHA} RATIO IN HIGH-RED...
 1991ApJS...75.1011G
 GREGORY, P. C.,...
 THE 87GB CATALOG OF RADIO SOURCES COVERI...
 1991ApJS...75....1B
 BECKER, R. L., ...
 A NEW CATALOG OF 53,522 4.85 GHZ SOURCES...
 1991AJ....102..518M
 MCCARTHY, P. J....
 HIGH REDSHIFT RADIO GALAXIES FROM THE TH...
 1990A&AS...82...41K
 KULKARNI, V. K....
 SPECTRAL INDEX DISTRIBUTION FOR A SAMPLE...
 1989AJ.....98..419V
 VIGOTTI, M., GR...
 STRUCTURES, SPECTRAL INDEXES, AND OPTICA...
 1985A&AS...59..255F
 FICARRA, A., GR...
 A NEW BOLOGNA SKY SURVEY AT 408 MHZ ...
 1967MmRAS..71...49G
 GOWER, J. F. R....
 A SURVEY OF RADIO SOURCES IN THE DECLINA...

Object: B30744+464
equinox: 1950
RA: 07 44 07.14
Dec: 46 26 25.0
z: 2.926
Mag:

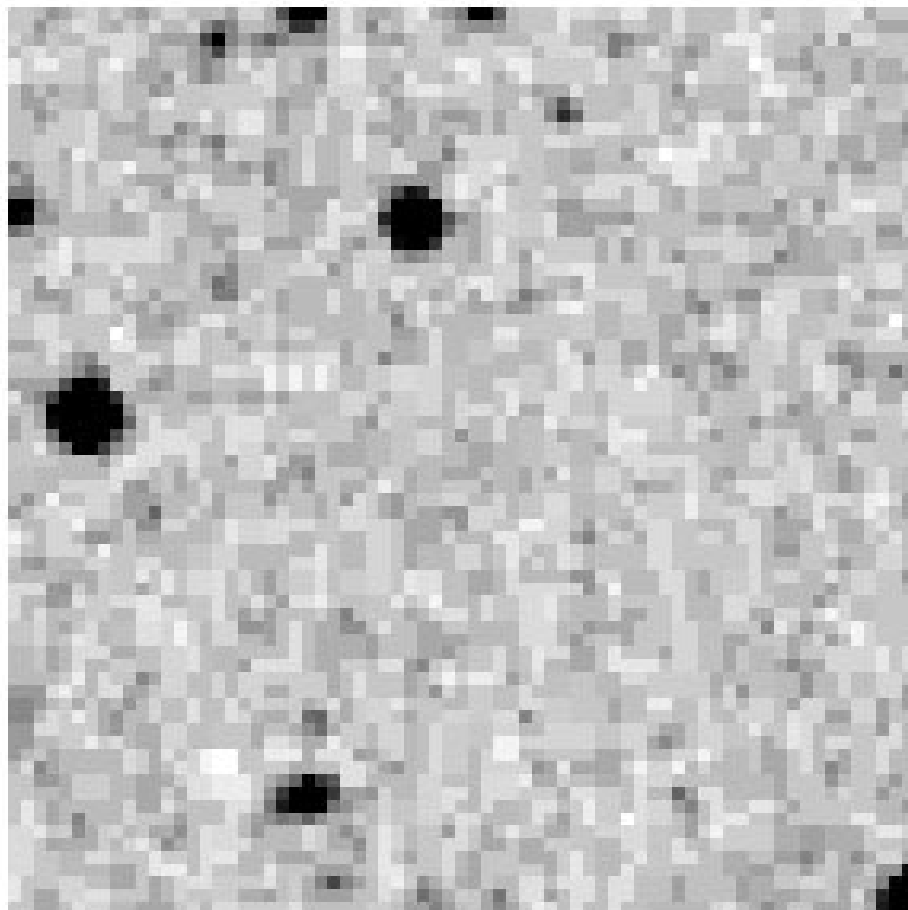
Comments:



65 x 65 arcsec



2 x 2 arcmin



References:

1997ApJS..109....1C
 CARILLI, C. L.,...
 RADIO CONTINUUM IMAGING OF HIGH-
 REDSHIFT...
 1996ApJ...460...68E
 EALES, S. A., A...
 A PANORAMIC VIEW OF RADIO GAL-
 AXY EVOLUTI...
 1996AJ....111.1945D
 DOUGLAS, J. N.,...
 THE TEXAS SURVEY OF RADIO
 SOURCES COVERI...
 1993MNRAS.263..139S
 SINGAL, A. K. ...
 COSMIC EVOLUTION AND LUMINOSITY
 DEPENDEN...
 1993ApJ...411...67E
 EALES, S. A., A...
 INFRARED SPECTROSCOPY OF 11 RADIO
 GALAXI...
 1992ApJS...79..331W
 WHITE, R. L., A...
 A NEW CATALOG OF 30,239 1.4 GHZ
 SOURCES ...
 1991ApJS...75.1011G
 GREGORY, P. C.,...
 THE 87GB CATALOG OF RADIO
 SOURCES COVERI...
 1991ApJS...75....1B
 BECKER, R. L., ...
 A NEW CATALOG OF 53,522 4.85 GHZ
 SOURCES...
 1991AJ....102..518M
 MCCARTHY, P. J....
 HIGH REDSHIFT RADIO GALAXIES
 FROM THE TH...
 1990A&AS...82...41K
 KULKARNI, V. K....
 SPECTRAL INDEX DISTRIBUTION FOR A
 SAMPLE...
 1989AJ.....98..419V
 VIGOTTI, M., GR...
 STRUCTURES, SPECTRAL INDEXES, AND
 OPTICA...
 12.
 1985A&AS...59..255F
 FICARRA, A., GR...
 A NEW BOLOGNA SKY SURVEY AT 408
 MHZ ...
 1967MmRAS..71...49G
 GOWER, J. F. R....
 A SURVEY OF RADIO SOURCES IN THE
 DECLINA...

McCarthy 1991 AJ,102,518

Object: USS0748+134

Comments:

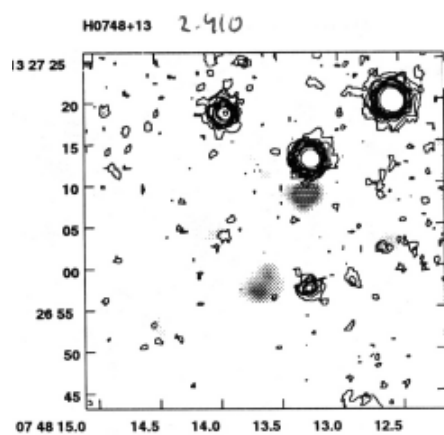
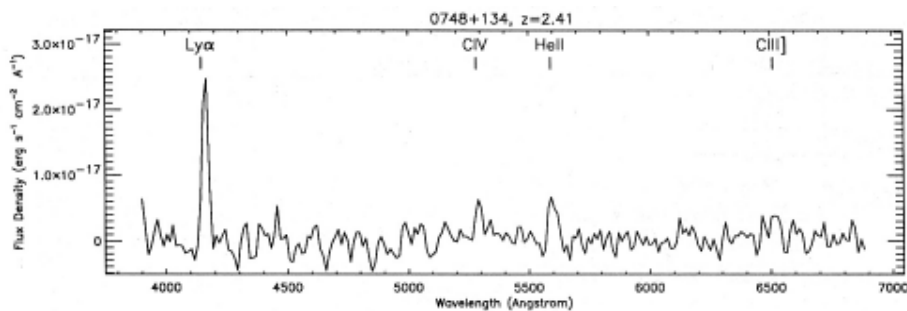
equinox: 1950

RA: 07 48 13.47

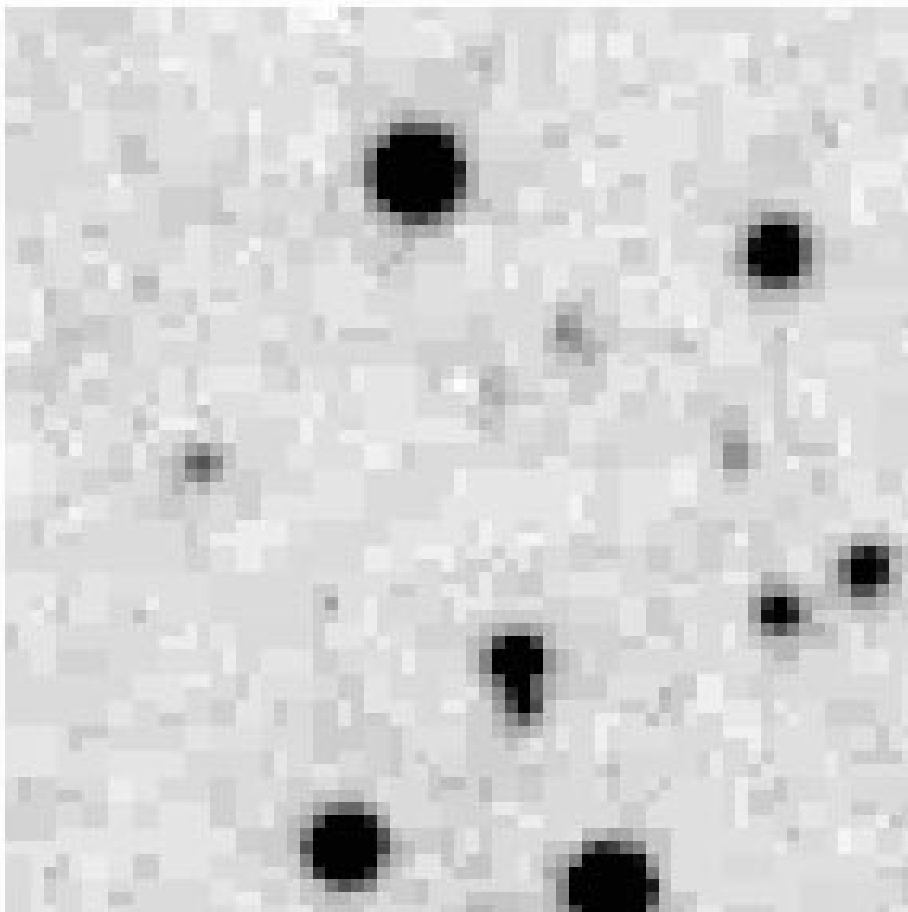
Dec: 13 27 03.0

z: 2.410

Mag:



2 x 2 arcmin



References:

1997ApJS..109....1C

CARILLI, C. L.,...

RADIO CONTINUUM IMAGING OF HIGH-REDSHIFT...

1997A&A...323...21V

VILLAR-MARTIN, ...

THE IONIZATION MECHANISM OF THE EXTENDED...

1997A&A...321..389v

VAN OJIK R., RO...

A SEARCH FOR MOLECULAR GAS IN HIGH REDSH...

1997A&A...317..358v

VAN OJIK R., RO...

THE GASEOUS ENVIRONMENTS OF RADIO GALAXI...

1996AJ....111.1945D

DOUGLAS, J. N.,...

THE TEXAS SURVEY OF RADIO SOURCES COVERI...

1996A&A...312..751V

VILLAR-MARTIN M.,...

THE EFFECTS OF RESONANCE SCATTERING AND ...

1995A&AS..114...51R

ROTTGERING, H. ...

CCD IMAGING OF ULTRA-STEEP-SPECTRUM RADI...

1992ApJS...79..331W

WHITE, R. L., A...

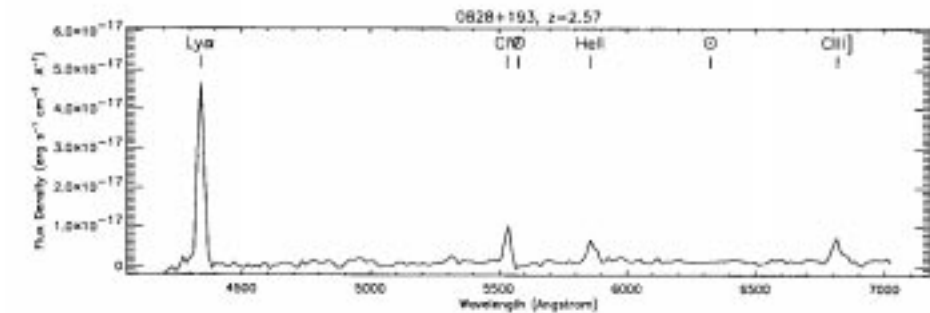
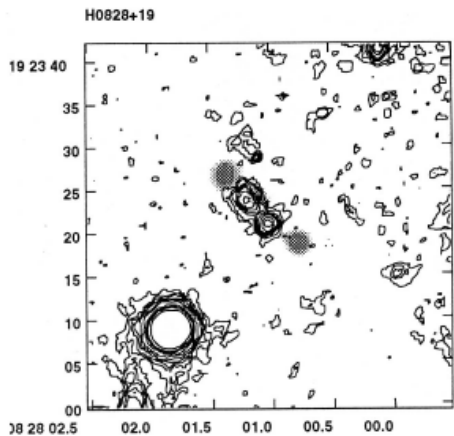
A NEW CATALOG OF 30,239 1.4 GHZ SOURCES ...

Roettgering et al. 1996,A&A,307,376 and ref. therein

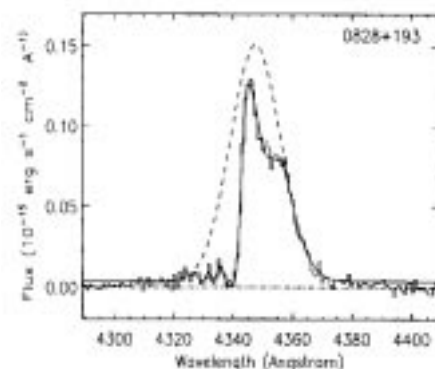
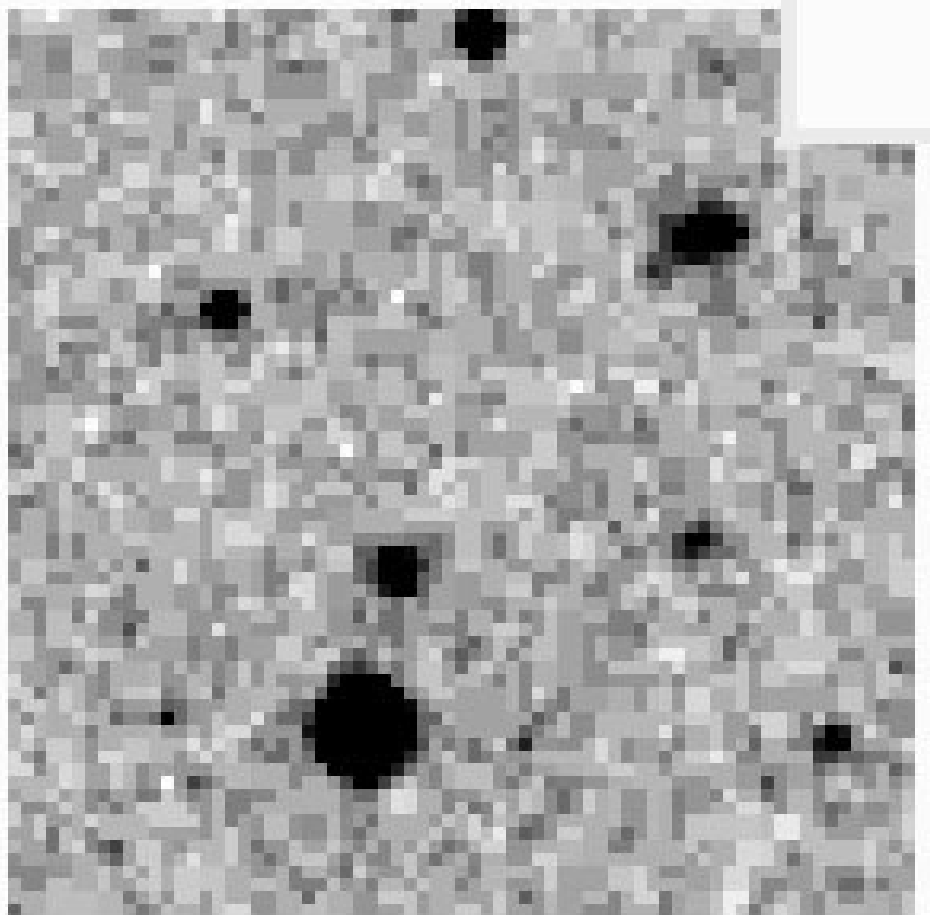
Object: USS0828+193
equinox: 1950
RA: 08 28 01.22
Dec: 19 23 23.8
z: 2.572
Mag: R_tot=20.9

Comments:
 two bright components, both polarized
 to 13-25% level in imaging polarimetry
 J2000 posn.
 08h30m53.4s
 +19d13m16s

References:
 Knopp et al. 1997, ApJ, 487, 644
 1997ApJS..109....1C
 CARILLI, C. L.,...
 RADIO CONTINUUM IMAGING OF HIGH-
 REDSHIFT...
 1997A&A...323...21V
 VILLAR-MARTIN, ...
 THE IONIZATION MECHANISM OF THE
 EXTENDED...
 1997A&A...321..389v
 VAN OJIK R., RO...
 A SEARCH FOR MOLECULAR GAS IN
 HIGH REDSH...
 1997A&A...317..358v
 VAN OJIK R., RO...
 THE GASEOUS ENVIRONMENTS OF
 RADIO GALAXI...
 1996ApJ...457..658E
 EVANS, A. S., S...
 A SEARCH FOR CO EMISSION IN HIGH-
 REDSHIF...
 1996AJ....111.1945D
 DOUGLAS, J. N.,...
 THE TEXAS SURVEY OF RADIO
 SOURCES COVERI...
 1996A&A...312..751V
 VILLAR-MARTIN M...
 THE EFFECTS OF RESONANCE SCAT-
 TERING AND ...
 1995A&AS..114...51R
 ROTTGERING, H. ...
 CCD IMAGING OF ULTRA-STEEP-
 SPECTRUM RADI...
 1994A&AS..108...79R
 ROTTERGING, H. ...
 SAMPLES OF ULTRA-STEEP SPECTRUM
 RADIO SO...



2 x 2 arcmin

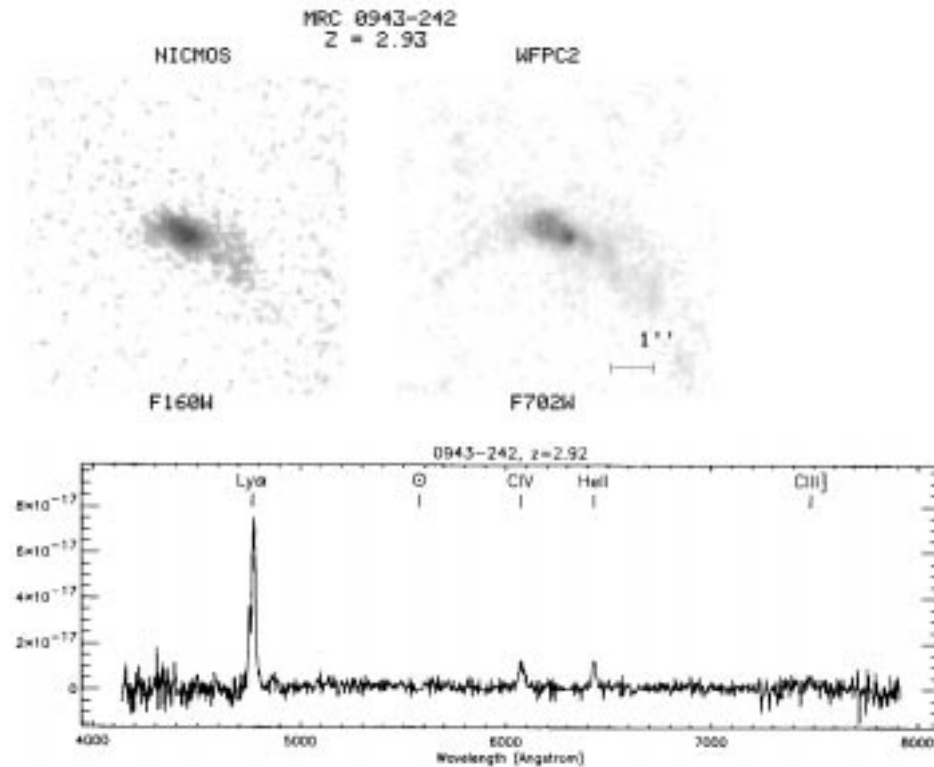


Object: MRC 0943-242
equinox: 1950
RA: 09 43 15.93
Dec: -24 14 57.8
z: 2.900
Mag: r=22.3

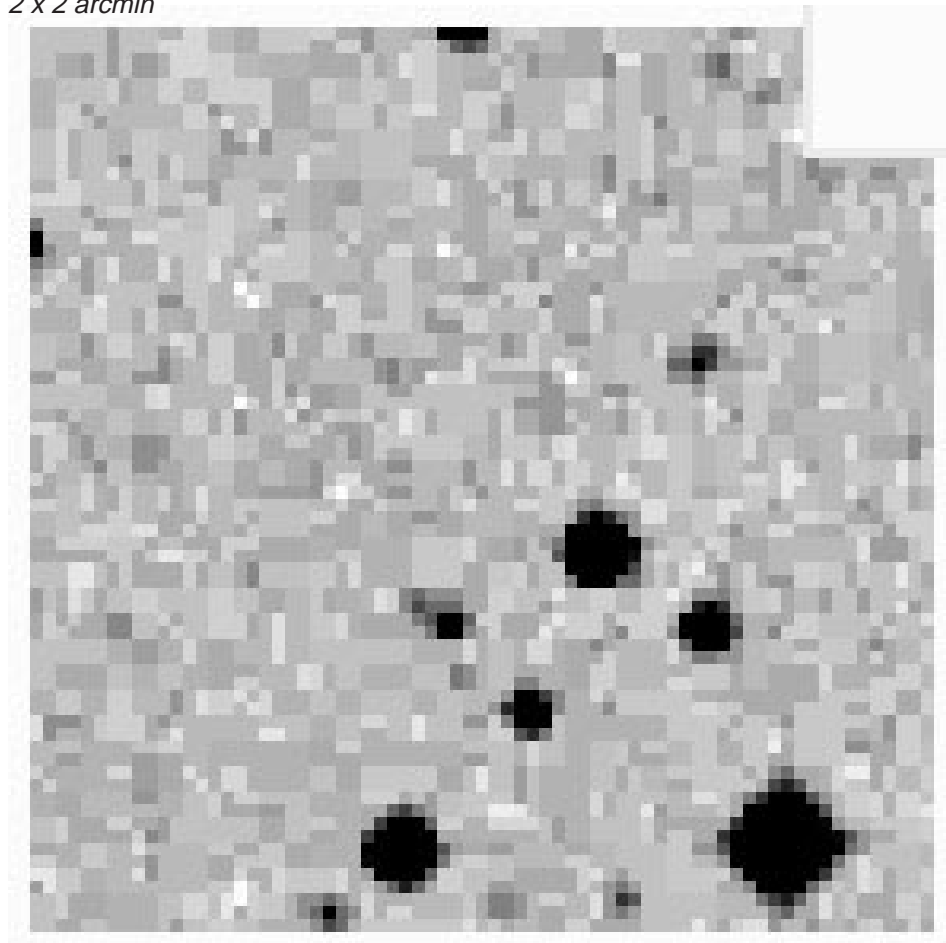
Comments:
P(R)~10% (SSA) perp., extended continuum

References:

1997ApJS..109....1C
CARILLI, C. L.,...
RADIO CONTINUUM IMAGING OF HIGH-REDSHIFT...
1997A&A...323...21V
VILLAR-MARTIN, ...
THE IONIZATION MECHANISM OF THE EXTENDED...
1997A&A...321..389v
VAN OJIK R., RO...
A SEARCH FOR MOLECULAR GAS IN HIGH REDSH...
1997A&A...317..358v
VAN OJIK R., RO...
THE GASEOUS ENVIRONMENTS OF RADIO GALAXI...
1996AJ....111.1945D
DOUGLAS, J. N.,...
THE TEXAS SURVEY OF RADIO SOURCES COVERI...
1996A&A...312..751V
VILLAR-MARTIN M...
THE EFFECTS OF RESONANCE SCATTERING AND ...
1995MNRAS.277..389R
ROTTGERING, H. ...
SPATIALLY RESOLVED LY{ ALPHA } ABSORPTION ...
1994ApJS...90..179G
GRIFFITH, M. R....
THE PARKES-MIT-NRAO (PMN) SURVEYS. III. ...
McCarthy et al. 1996, ApJS, 106, 281

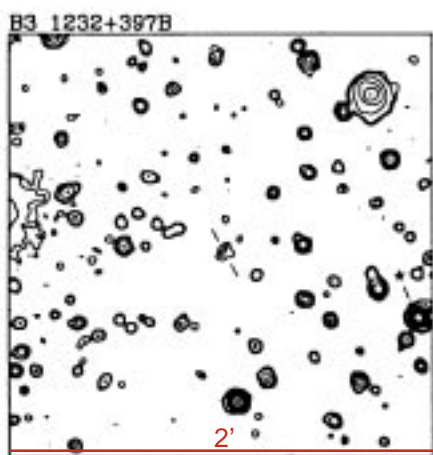


2 x 2 arcmin

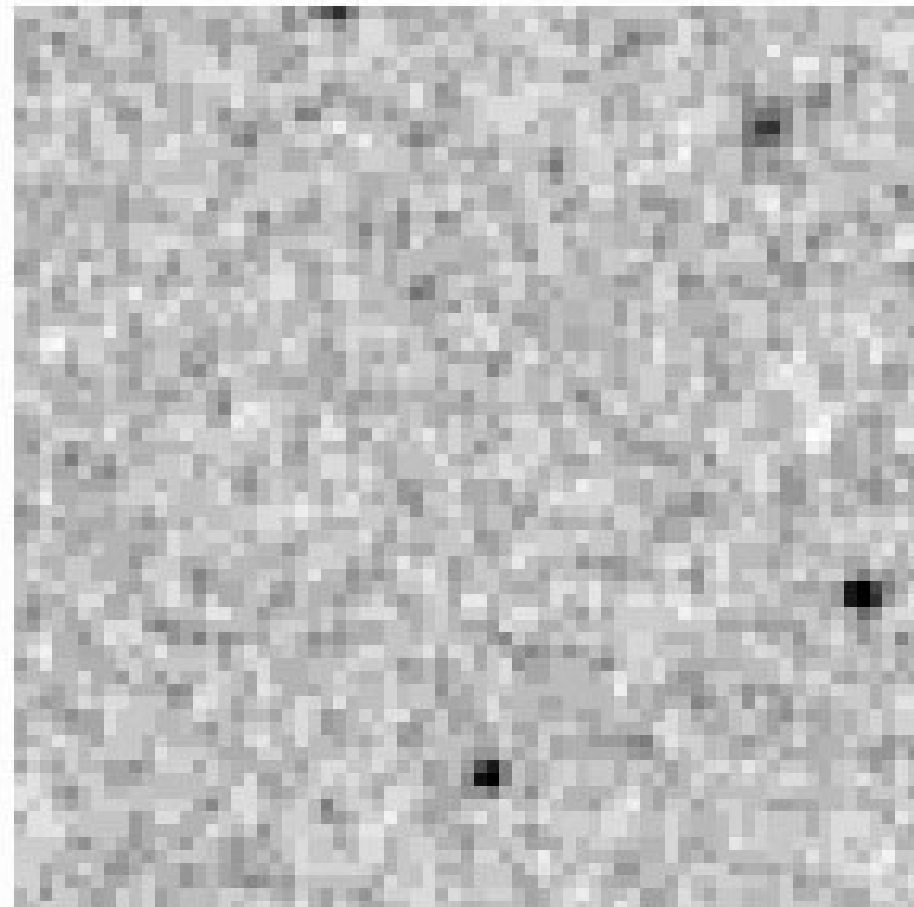


Object: 4C 39.37 = 6C1232+39
equinox: 1950
RA: 12 32 39.12
Dec: 39 42 09.2
z: 3.220
Mag: r=23.1,i=22.2

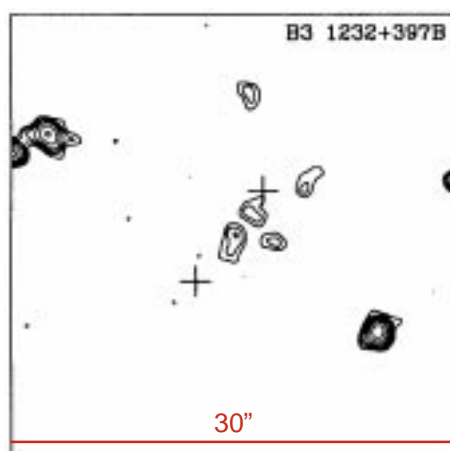
1997ApJS..109....1C
 CARILLI, C. L.,...
 RADIO CONTINUUM IMAGING OF HIGH-
 REDSHIFT...
 1996MNRAS.279..535M
 MAZZEI, P., AND...
 DUST IN HIGH-REDSHIFT RADIO GAL-
 AXIES AND...
 1996ApJ...460...68E
 EALES, S. A., A...



2 x 2 arcmin



Comments:
 A PANORAMIC VIEW OF RADIO GALAXY
 EVOLUTI...
 1996AJ....111.1945D
 DOUGLAS, J. N.,...
 THE TEXAS SURVEY OF RADIO
 SOURCES COVERI...
 1996A&A...313..417K
 KLEIN U., VIGOT...
 HIGH-REDSHIFT B3 RADIO SOURCES AT
 1.3MM ...
 1995MNRAS.274..939L
 LAW-GREEN, J. D...
 VLA OBSERVATIONS OF DRAGNS IN
 THE 3CR AN...
 1994MNRAS.271..504L
 LACY, M., MILEY...
 8C 1435+635: A RADIO GALAXY AT Z =
 4.25 ...



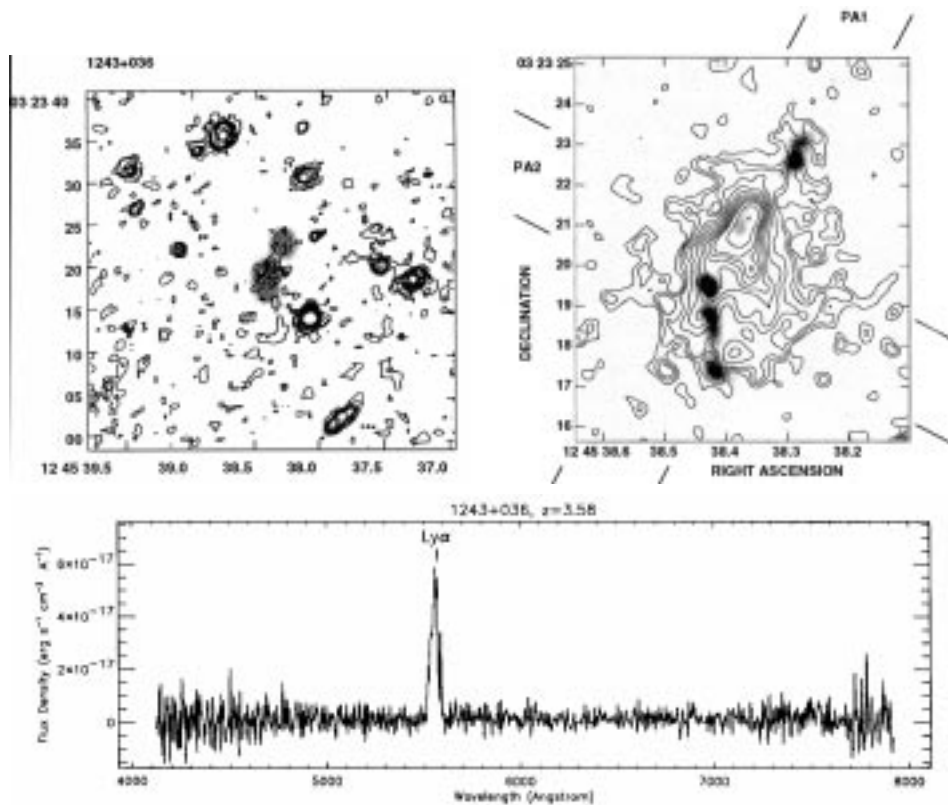
References:
 1994AJ....108..828T
 THOMPSON, D., D...
 IDENTIFICATIONS AND SPECTROSCOPY
 OF FAIN...
 1994A&A...288L..33C
 CHINI, R., AND ...
 DUST AT HIGH Z ...
 1993ApJ...411...67E
 EALES, S. A., A...
 INFRARED SPECTROSCOPY OF 11 RADIO
 GALAXI...
 1993ApJ...409..578E
 EALES, S. A., R...
 AN OPTICALLY LUMINOUS RADIO
 GALAXY AT Z ...
 1992MNRAS.258..647N
 NAUNDORF, C. E...
 A SAMPLE OF 6C SOURCES SELECTED
 AT THE P...
 1991ApJS...75.1011G
 GREGORY, P. C.,...
 THE 87GB CATALOG OF RADIO
 SOURCES COVERI...
 1991ApJS...75..297H
 HEWITT, A., AND...
 AN OPTICAL CATALOG OF EXTRAGA-
 LACTIC EMIS...
 1991ApJS...75....1B
 BECKER, R. L., ...
 A NEW CATALOG OF 53,522 4.85 GHZ
 SOURCES...
 1990MNRAS.243p..14R
 RAWLINGS, S., E...
 THE DETECTION OF FOUR HIGH-
 REDSHIFT (0.5...
 1990A&AS...82...41K
 KULKARNI, V. K...
 SPECTRAL INDEX DISTRIBUTION FOR A
 SAMPLE...
 1989AJ....98..419V
 VIGOTTI, M., GR...
 STRUCTURES, SPECTRAL INDEXES, AND
 OPTICA...
 1985A&AS...59..255F
 FICARRA, A., GR...
 A NEW BOLOGNA SKY SURVEY AT 408
 MHZ ...
 1970AJ....75..764O
 OLSEN, E. T. ...
 OPTICAL IDENTIFICATION OF RADIO
 SOURCES ...
 1967AJ....72..738O
 OLSEN, E. T. ...
 ACCURATE POSITIONS OF SELECTED 4C
 SOURCE...
 1965MmRAS..69..183P
 PILKINGTON, J. ...
 A SURVEY OF RADIO SOURCES BE-
 TWEEN DECLIN...

Object: USS1243+036
equinox: 1950
RA: 12 43 05.49
Dec: 03 39 43.6
z: 3.581
Mag: R=22.5

Comments:
Huge Ly-a halo

References:

1997A&A...321..389v
VAN OJIK R., RO...
A SEARCH FOR MOLECULAR GAS IN
HIGH REDSH...
1997A&A...317..358v
VAN OJIK R., RO...
THE GASEOUS ENVIRONMENTS OF
RADIO GALAXI...
1996ApJS..107..175R
RHEE, G., MARVE...
VLA IMAGING OF A SAMPLE OF STEEP-
SPECTRU...
1996AJ....111.1945D
DOUGLAS, J. N.,...
THE TEXAS SURVEY OF RADIO
SOURCES COVERI...
1996A&A...313...25v
VAN OJIK R., RO...
A POWERFUL RADIO GALAXY AT Z=3.6
IN A GL...
1995A&AS..114...51R
ROTTGERING, H. ...
CCD IMAGING OF ULTRA-STEEP-
SPECTRUM RADI...
1992ApJS...79..331W
WHITE, R. L., A...
A NEW CATALOG OF 30,239 1.4 GHZ
SOURCES ...
1967MmRAS..71...49G
GOWER, J. F. R....
A SURVEY OF RADIO SOURCES IN THE
DECLINA...



2 x 2 arcmin

