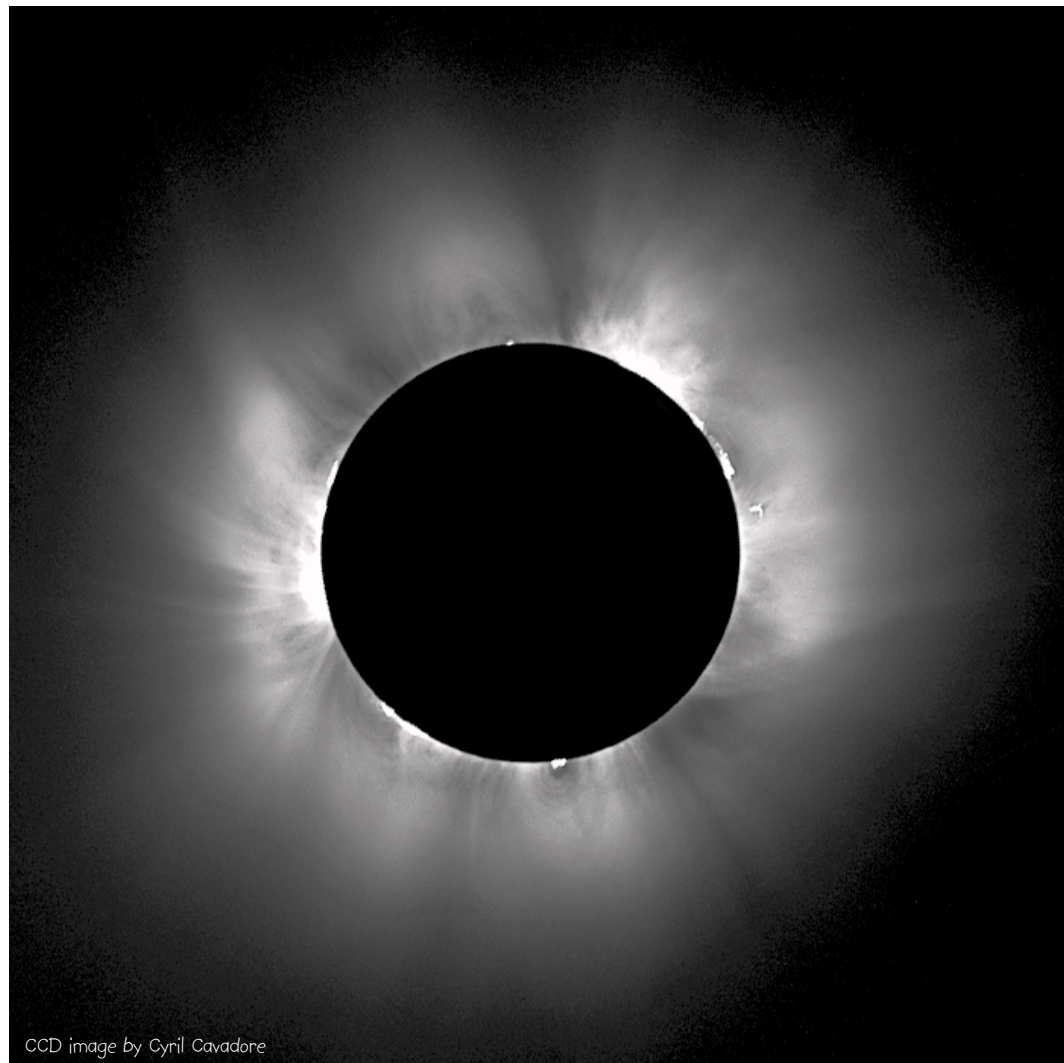
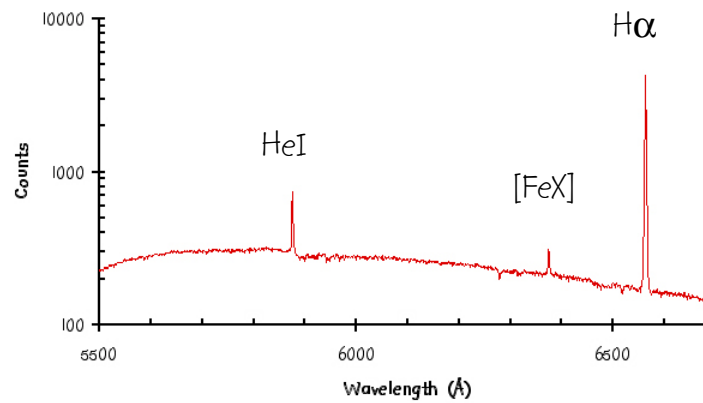


# Total Solar Eclipse, 11 Aug '99



CCD image by Cyril Cavadore

Solar coronal spectrum, CAOS collaboration

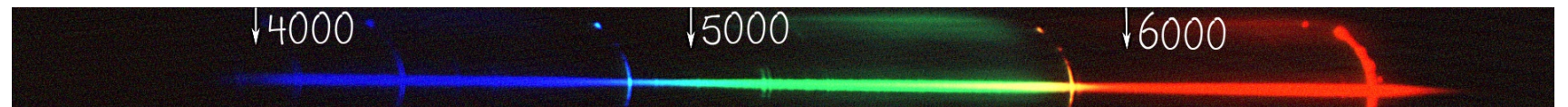
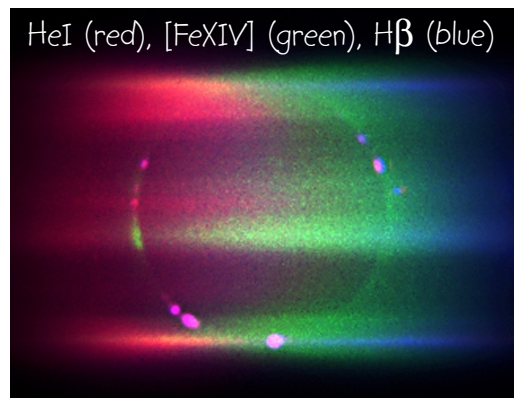
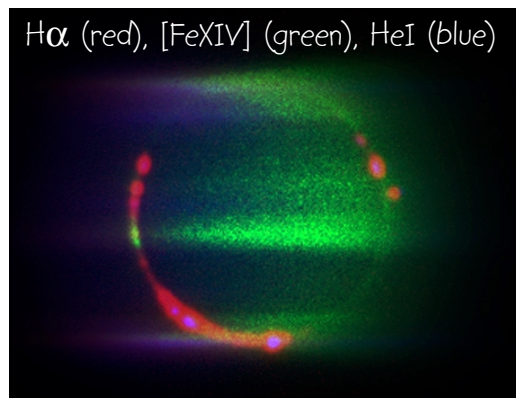


This collection of eclipse images is derived from observations made by: Bob Fosbury (slitless spectra); Carlos Guirao Sanchez, Gerardo Avila & Jesus Rodriguez (coronal spectrum); Cyril Cavadore, L Bernasconi & B Gaillard (CCD image of corona); Philippe Duhoux (image of chromosphere & 'diamond ring') and Trish Fosbury (sky after 3<sup>rd</sup> contact).

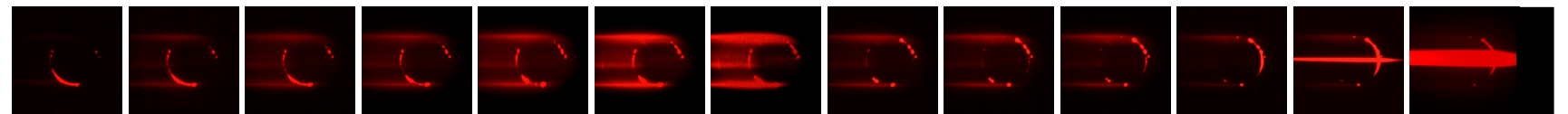
The slitless spectra were taken with a Hasselblad camera and a 180mm Sonnar with 2XE converter at f/11. The light was dispersed with a 315 l/mm blazed transmission grating and exposures ranged from 1/60s to 1s.



Image by Trish Fosbury



Just before 3<sup>rd</sup> contact, the low chromosphere shows the Fraunhofer lines in emission — the 'reversing layer'; note MgI 5167/72/83Å



A sequence of 13 images from the set of spectra showing the chromosphere in the light of hydrogen (Hα) — from 2<sup>nd</sup> - 3<sup>rd</sup> contact

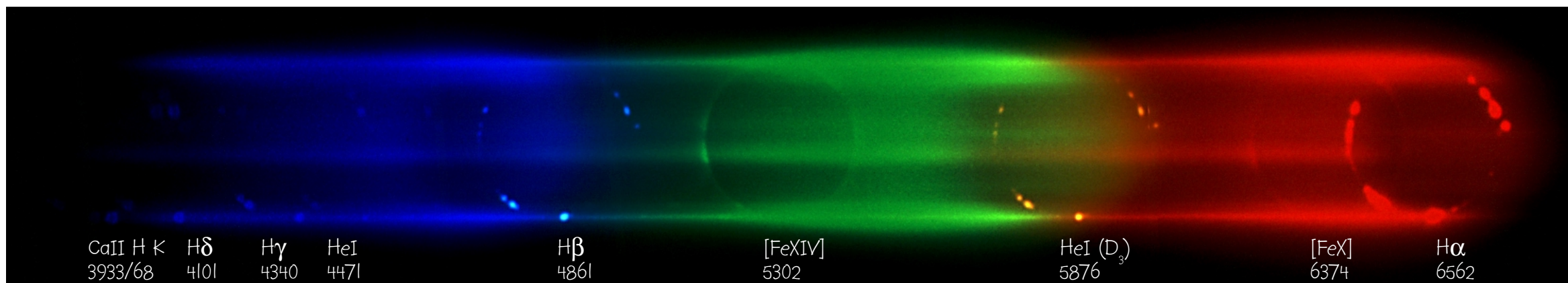


Image by Philippe Duhoux