

collect many terabytes of data, and reuse is both necessary but also problematic.

– Beyond data, astronomy is all about information. Compression is a by-product of image models. Loss of information involved in compression raises a range of questions. In its broadest sense, compression is summarisation, and therefore is part of the overall process of scientific analysis.

Example: The costs of long-term data storage are large. With greater and better ground-based and space-borne observatories, these costs cannot be ignored. With our knowledge of, and expertise in, state-of-the-art and emerging computational technologies, what is our recommendation to the world's space agencies and observatories in regard to future policy?

These thematic themes of the Network will be axed around a series of workshops.

A conference on the Network's overall theme will be held shortly before the end of the Network, with the aim of bringing the results obtained to a wide audience.

A selected set of papers will be published in book form.

The Coordination Committee and Contact Information

The Coordination Committee consists of:

A. Bijaoui, Observatoire de la Côte d'Azur, Nice
(bijaoui@corelli.obs-nice.fr)

V. Di Gesù, Department of Mathematics and Applications, University of Palermo
(digesu@ipamat.cres.it)

A. Heck, Observatoire Astronomique, Strasbourg (heck@cdsxb6.u-strasbg.fr)

M.J. Kurtz, Center for Astrophysics, Harvard
(kurtz@cfa.harvard.edu)

P. Linde, Lund Observatory, Lund
(peter@astro.lu.se)

M.C. Maccarone, IFCAI, Palermo
(cettina@ifcai.pa.cnr.it)

R. McMahon, Institute of Astronomy, Cambridge
(rgm@mail.ast.cam.ac.uk)

R. Molina, University of Granada
(rms@ugr.es)

F. Murtagh, European Southern Observatory, Garching
(fmurtagh@eso.org)

E. Raimond, Netherlands Foundation for Research in Astronomy, Dwingeloo
(exr@nrao.nl), ESF representative

The Coordination Committee decides on administrative matters, but needless to say, many others will be involved. The Network Chair is

M.C. Maccarone
(cettina@ifcai.pa.cnr.it),

and the Secretary is
F. Murtagh(fmurtagh@eso.org).

Information on the Network can be obtained on the WWW at the address:
<http://www.hq.eso.org/conv-comp.html>.

ESO on CompuServe

F. MURTAGH, ST-ECF, Garching

ESO press releases and a great deal of other ESO information are available on the World-Wide Web (URL: <http://www.hq.eso.org/>). For over a year, press releases including images are also available on CompuServe. They may be accessed in the Space/Astronomy area (GO SPACE).

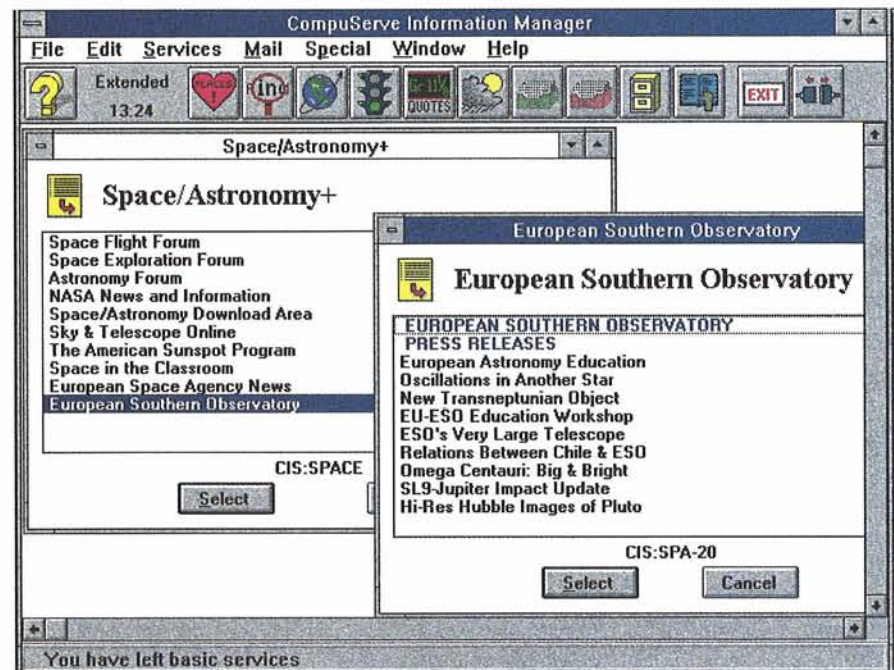
CompuServe is a commercial information service, offering local access at many locations worldwide. Membership is about 2.5 million worldwide, of which around 170,000 are in Europe. A very large number of discussion groups and information libraries are available which span all subject domains. Other areas cater for weather images and forecasts, news-feeds from major agencies, a range of databases, and so forth. A number of user interfaces (browsers) are available which support access in a convenient manner, display of images and videos, e-mail, file management of download areas, and navigation through the varied services on offer. Access is often by modem, using dial-up to a local telephone number.

In some respects this is like what the Internet offers, with newsgroups, anonymous ftp and WWW. In fact, it can be claimed with justice that the Internet is slowly groping towards the type of service which has long been available on systems like CompuServe. Only recently,

with the emergence of new, reliable and user-friendly toolsets, has the Internet become easily accessible to those who are not networking enthusiasts. The Internet has still some way to go, in terms

of ease of access to relevant information.

Especially in Europe, where home and personal connectivity to the Internet is not very high as yet, CompuServe offers an excellent medium to allow for wide



A view of CompuServe, as seen on a Windows notebook, showing the Space/Astronomy area and ESO press releases. Items are clicked on, to access contents. ESO images are available in the area's libraries.

distribution of ESO press information. A basic personal Internet link would not allow for easy transfer of image material. For this reason, access to CompuServe is practical for journalists, teachers and educators, and for others whose professional work environments do not bear the infrastructural costs of Internet access. Unlike national on-line services in Europe, CompuServe is significantly represented internationally. A final point in favour of CompuServe over its large Internet cousin is that much of the information available is of greater quality,

not least the messages exchanged in the discussion groups.

During the 'comet week' in July 1994, CompuServe saturated just like various places on the Internet. At the end of the Shoemaker-Levy 9 event, 628 images were available on CompuServe, and 258 information files, originating in 37 observatories or institutes. In addition, there had been 22 video files and many thousands of messages exchanged.

Growth in CompuServe's subscription base is around 50 % per annum. CompuServe's Space/Astronomy area

gets several thousand accesses per week. ESO's press releases are made available there, at the time of release. Many expressions of appreciation have been received from CompuServe members regarding this possibility to access information on ESO's work.

For further information please contact:
F. Murtagh, ST-ECF, Garching
(Internet: fmurtagh@eso.org
CompuServe: 100120,3377)

ANNOUNCEMENTS

Council and Committee Members in 1995

Council

Belgium:	J.P. Swings (Vice-President) E.L. van Dessel
Denmark:	H. Jørgensen H. Grage
France:	B. Fort J. Fouan
Germany:	D. Reimers A. Freytag
Italy:	F. Pacini C. Chiuderi E. Campo
The Netherlands:	E.P.J. van den Heuvel J. Bezemer
Sweden:	B. Gustafsson B. Brandt
Switzerland:	G. Tammann P. Creola (President) St. Berthet
Portugal:	F. Bello (Observer)

Sweden:
Switzerland:
Portugal:

J. Gustavsson*
M. Gottret
F. Bello (Observer)

Observing Programmes Committee

Members

C.-J. Björnsson (1993-97)
J. Lequeux (1994-96)
G. Chincarini (1992-96)
Knude (1994-98)
J. Krautter* (1992-96)
W. Schmutz (1993-97)
C. Waelkens (1995-99)
F. Verbunt (1993-97)
T. Lago (1993-96) Observer
J. Mould (Observer)

Substitutes

E. van Groningen
M. Gérin
G. Vettolani
P. Kjærgaard Rasmussen
Th. Gehren
Y. Chmielewski
H. Dejonghe
J. Lub

P. Barthel, Member at large
R. Sancisi, Member at large
C. de Bergh, Member at large

Committee of Council

J.P. Swings	E. Campo
H. Grage	J. Bezemer
J. Fouan	B. Gustafsson, B. Brandt
A. Freytag	P. Creola
F. Pacini	

Users Committee

N. Bergvall (1993-96)
M. Denefeld* (1992-95)
S. Di Serego Alighieri (1993-96)
F.P. Israel (1994-97)
J. Mould (Observer)

P. Magain (1995-98)
B. Nordström (1995-98)
H. Schild (1994-97)
H. Zinnecker (1992-95)

*Chairman

Scientific Technical Committee

J. Andersen* (1992-96)	T. Lago (1991-95) (Observer)
S. Beckwith (1994-98)	O. Lefèvre (1995-97)
A. Blecha (1992-96)	B. Marano (1993-97)
R. Braun (1993-97)	S. Ortolani (1993-97)
K.S. de Boer (1991-95)	J.W. Pel (1992-96)
D. Dravins (1993-97)	Ch. Sterken (1990-96)
R. Foy (1990-95)	J. Mould (Observer)

Finance Committee

Belgium:	P. Léger
Denmark:	B.K. Rosengreen
France:	P. Laplaud/M. Nauciel
Germany:	M. Stötzel
Italy:	U. Sessi
The Netherlands:	J. Bezemer

Time-Table of Council Sessions and Committee Meetings

February 10	Scientific Technical Committee (extraord.)
March 21	Finance Committee (extraord.)
May 2-3	Users Committee
May 4-5	Scientific Technical Committee
May 9-10	Finance Committee
June 7-8	Council
September 25	Finance Committee (extraord.)
November 2-3	Scientific Technical Committee
November 6-7	Finance Committee
November 21-24	Observing Programmes Committee
November 28-29	Council