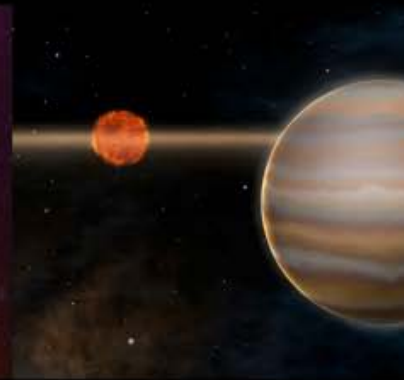
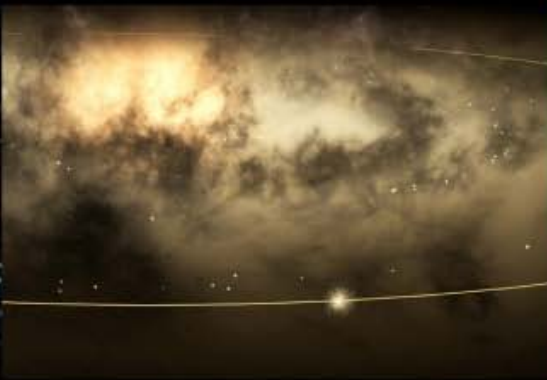


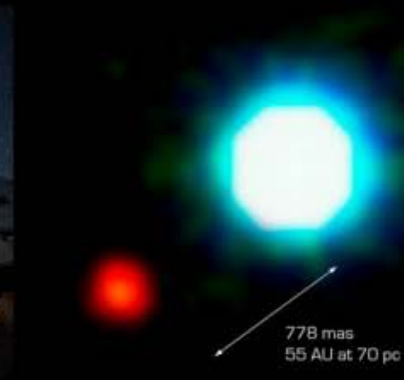
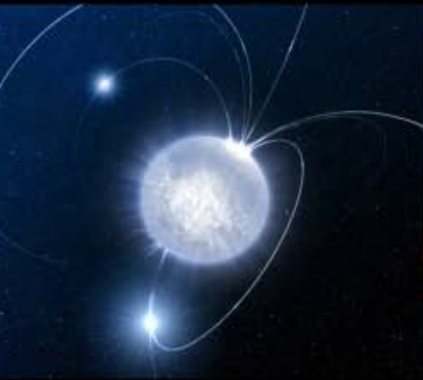
# Himmelsbeobachtungen verändern unser Weltbild



Bruno Leibundgut  
ESO

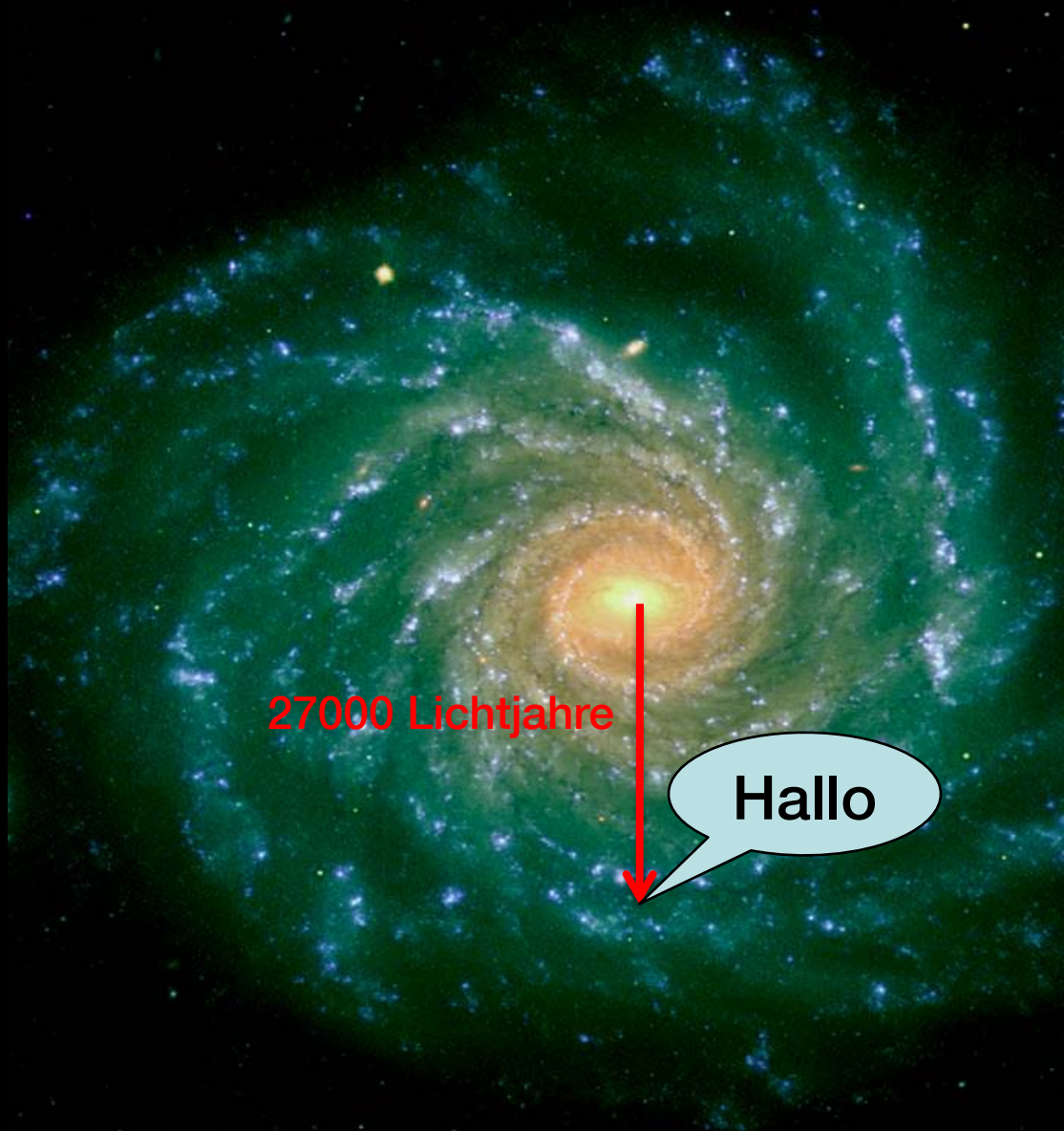


# Astronomie – Faszinierende Wissenschaft





# Unser Platz im Universum



27000 Lichtjahre

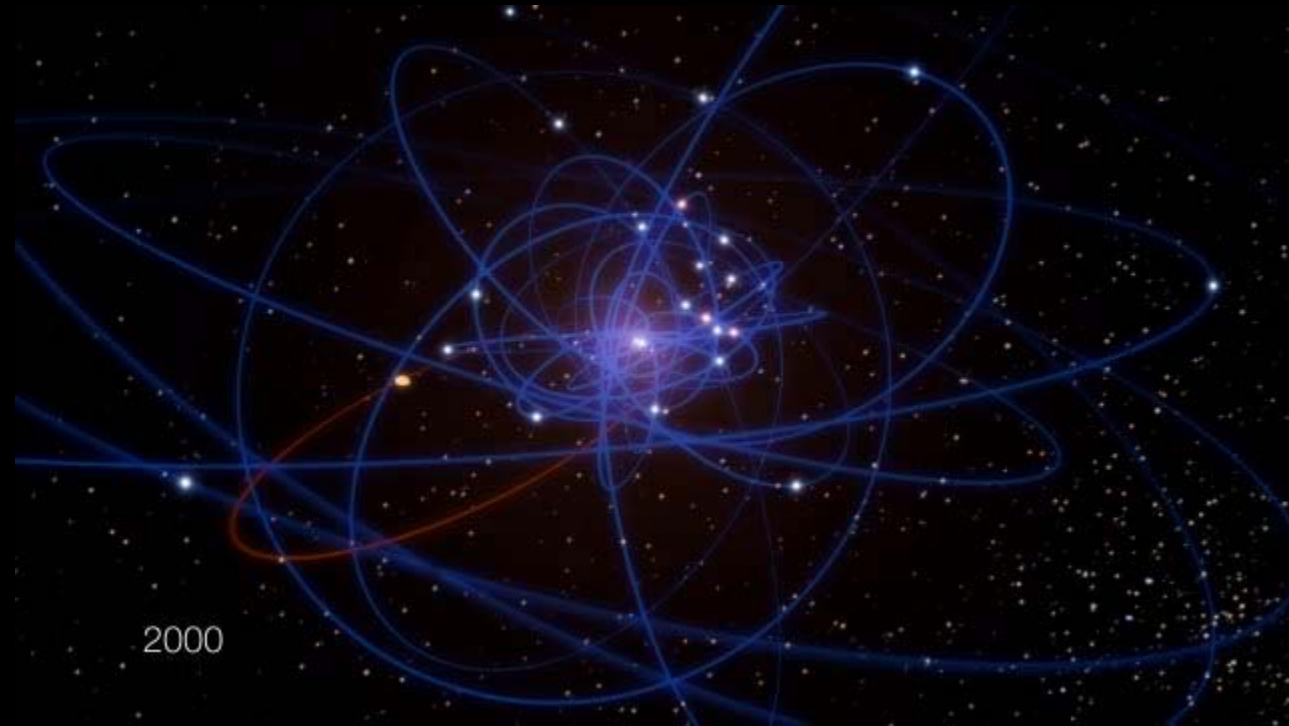
Hallo

# Beobachtungen des Unsichtbaren



Reise zum Zentrum der Milchstrasse

# Das Schwarze Loch im Zentrum der Milchstrasse





A world map at night, showing city lights. Red arrows point to specific locations: Garching bei München in Germany, and Paranal, La Silla, and Santiago in Chile. The text labels are in red.

**Garching bei München**

**Paranal**

**La Silla**

**Santiago**

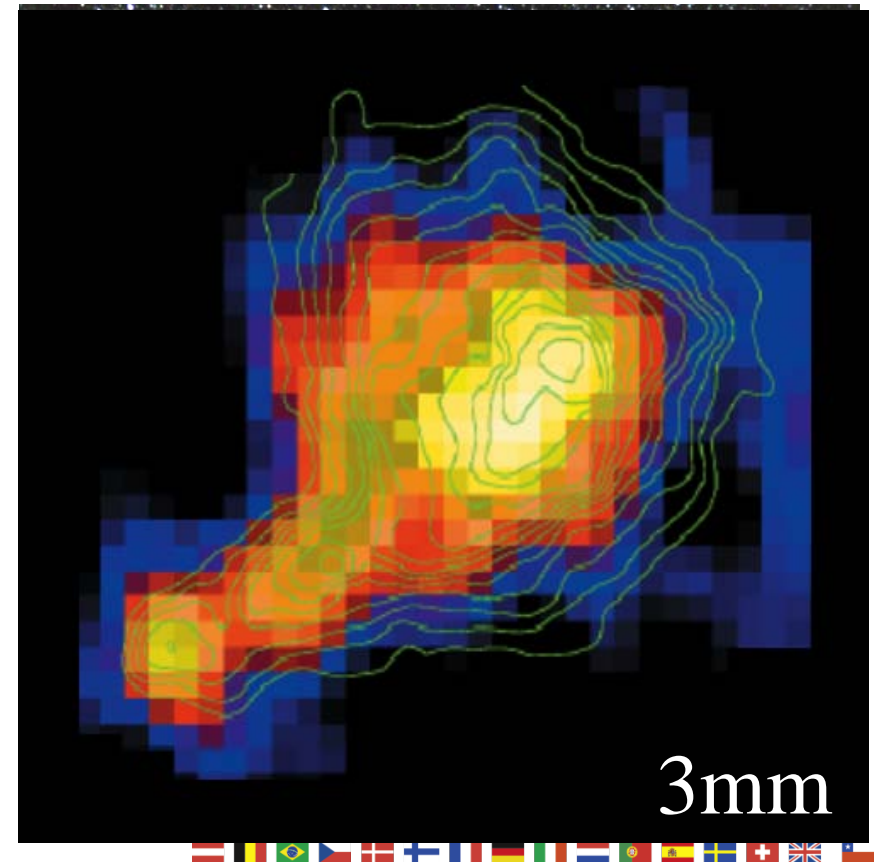
**Chajnantor**





# Weshalb Teleskope und Antennen?

- Was in einer Wellenlänge schwach leuchtet kann an einer anderen sehr hell sein
- Beispiel: Wärmebilder

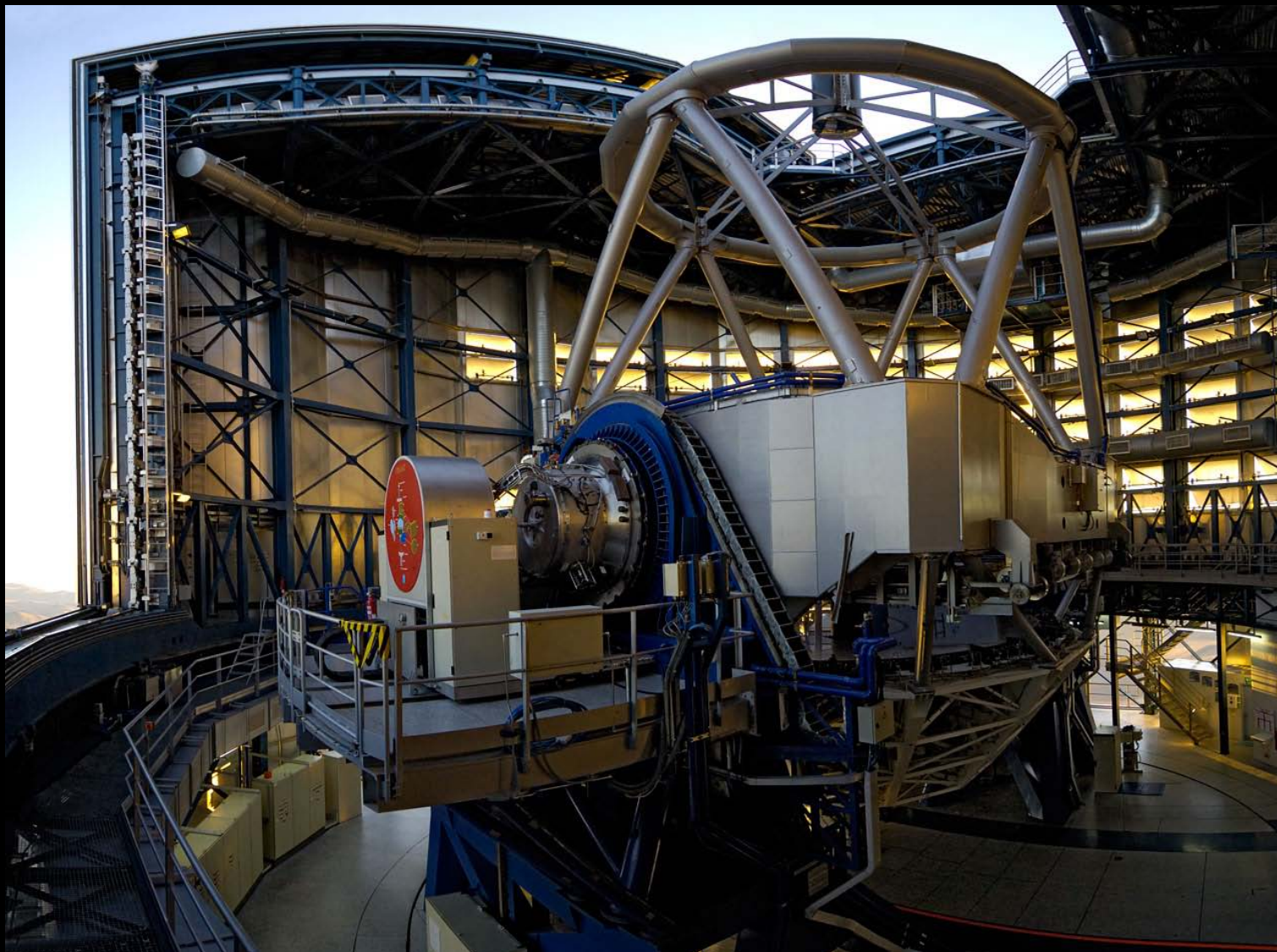




# Eine Nacht auf Paranal



# Eines der 8m Teleskope



# Volle Kontrolle der Spiegel

VLT ACTIVE OPTICS

ROTATING CROSSES

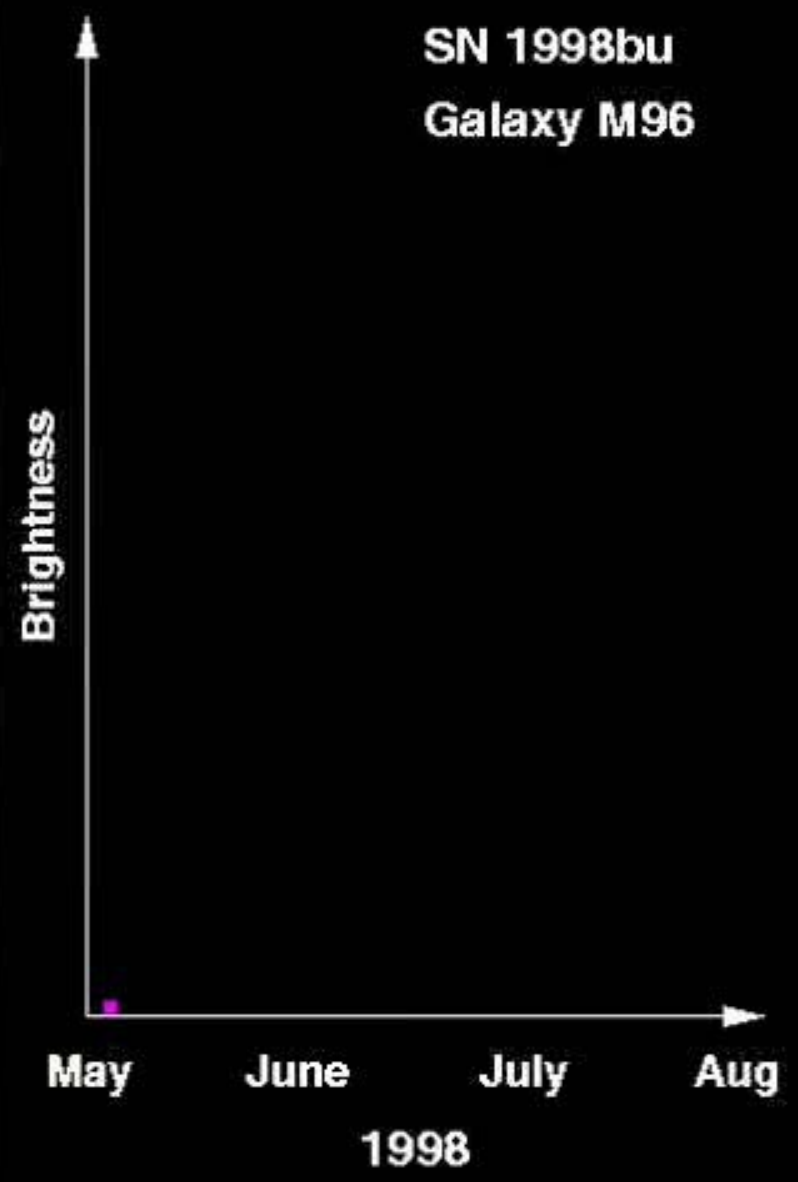
VLT ACTIVE OPTICS

LETTERS



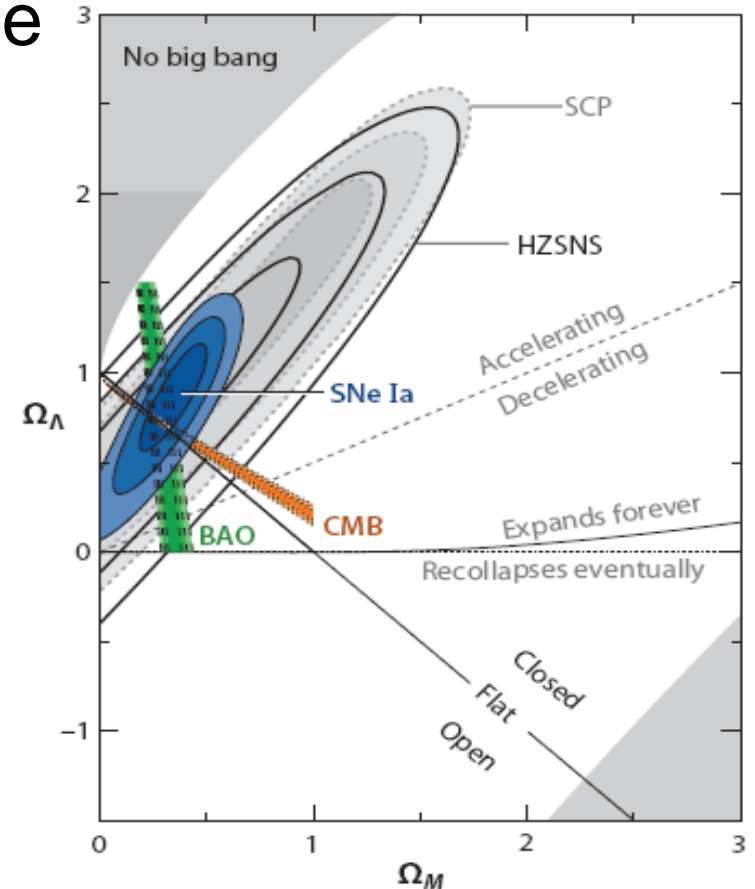
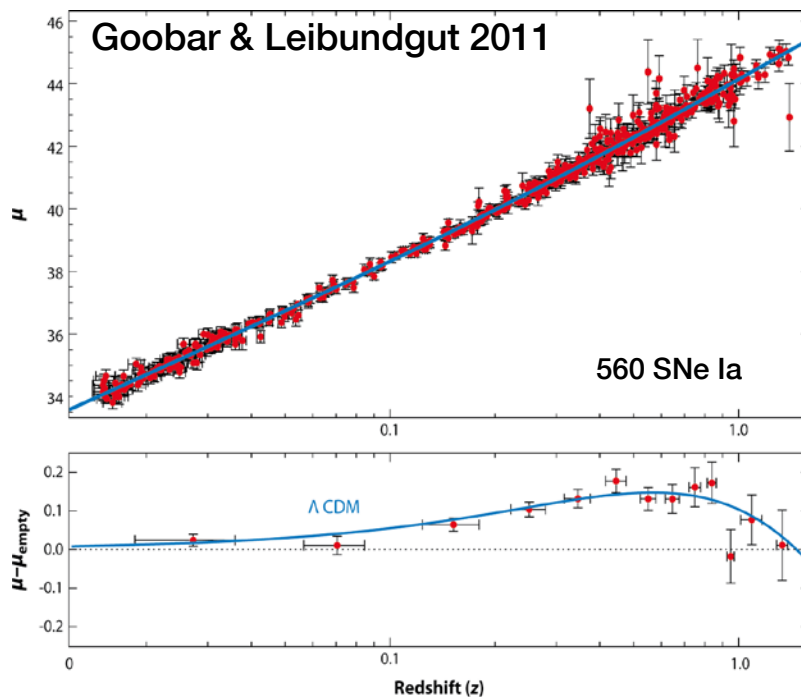
# Kleiderwechsel







- Wichtiger Beitrag zur Messung der beschleunigten Expansion durch Supernovae  
→ Physik Nobelpreis 2011



# ALMA





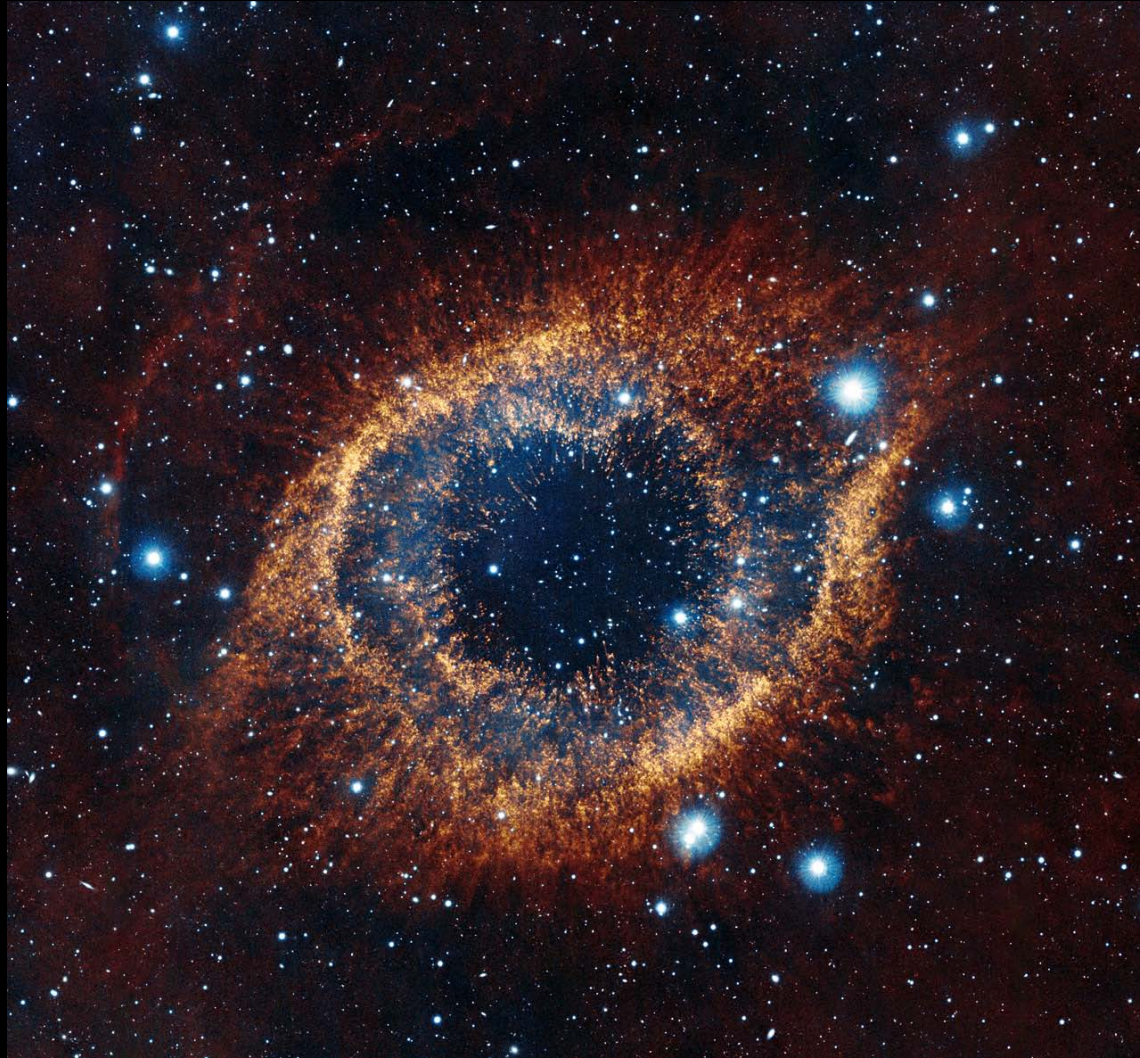
# ALMA Antennentransport



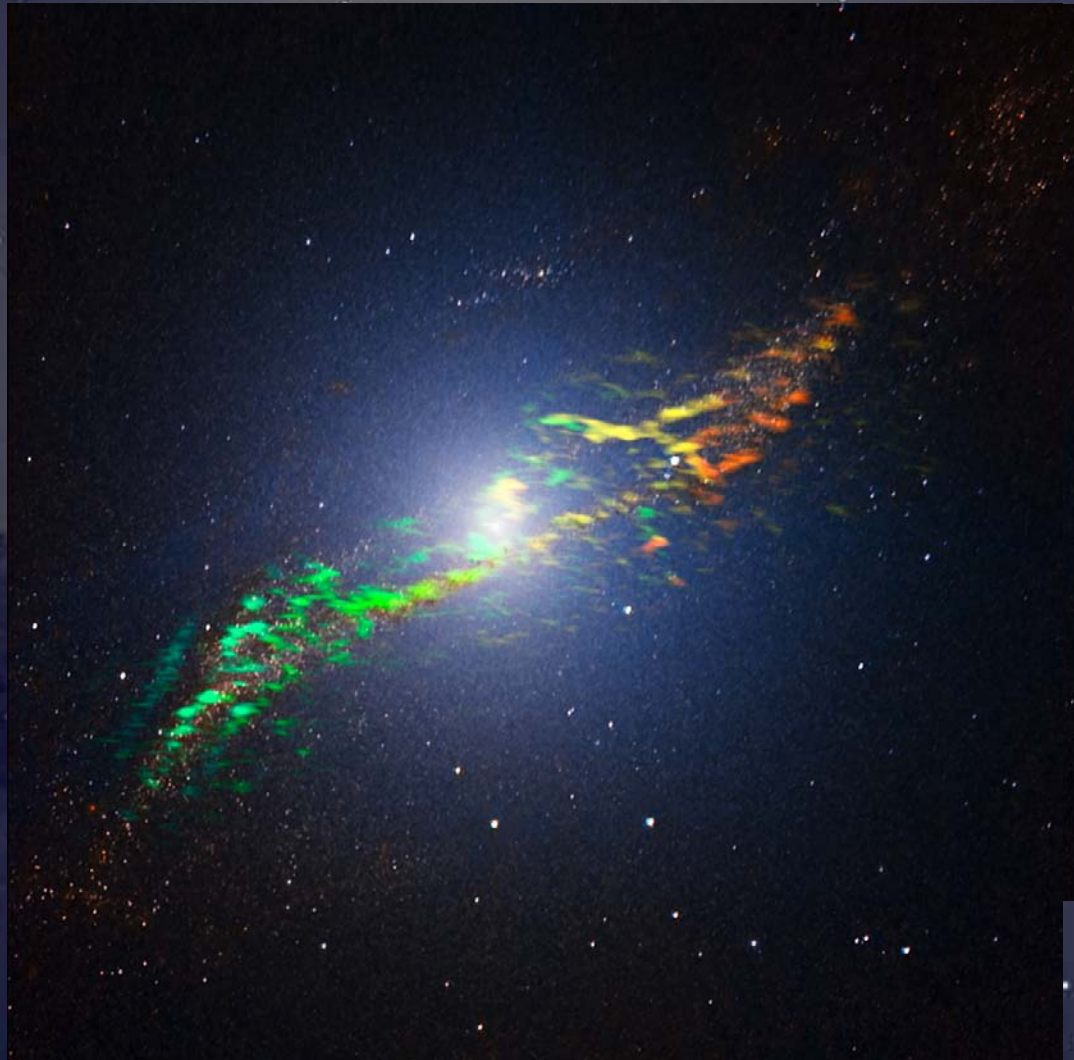




# Helix Nebel



50  
YE  
1962-



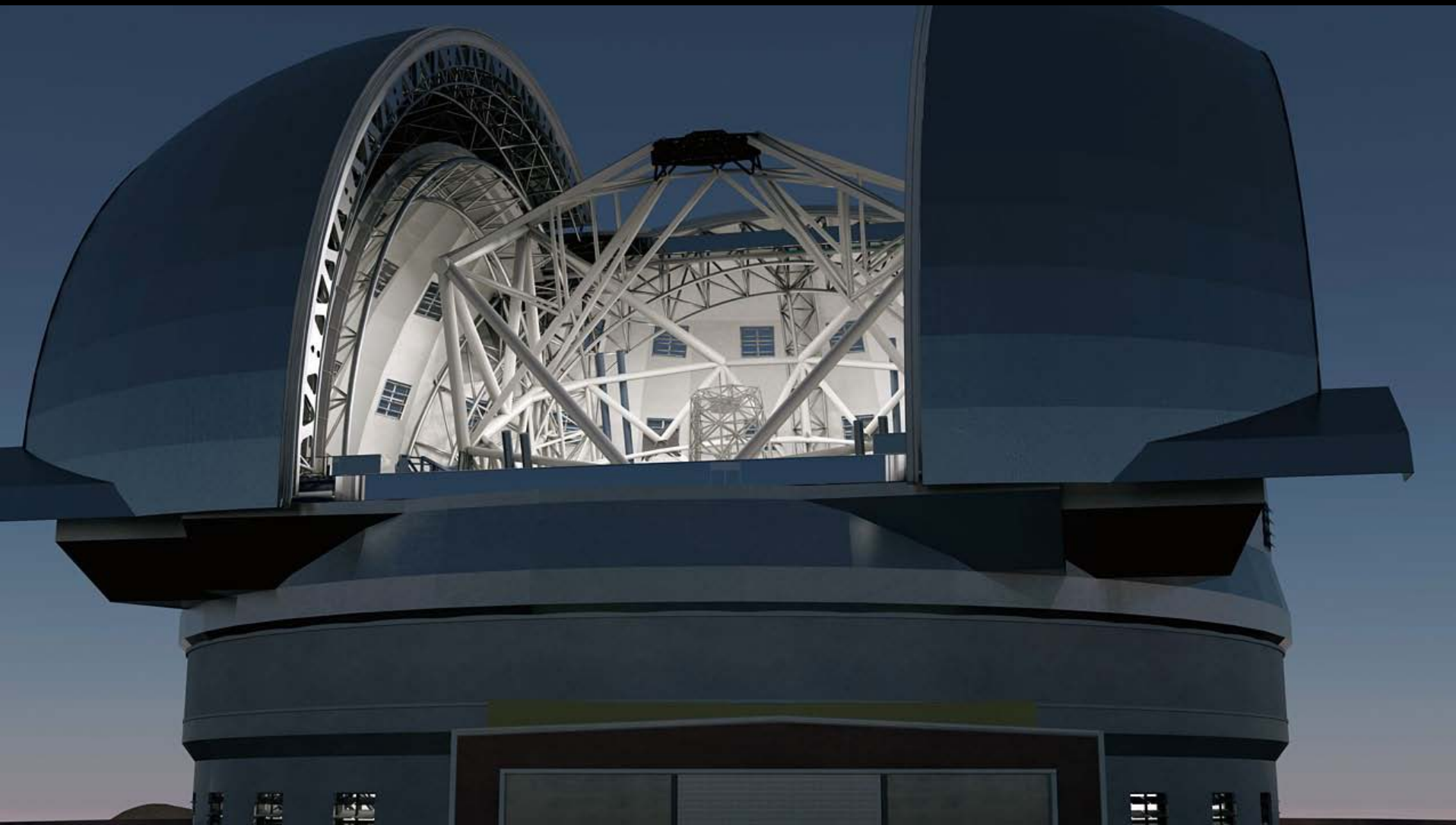
Think Big | 1







# ESO's nächstes Projekt Das E-ELT



# Ein Zukunftstraum

